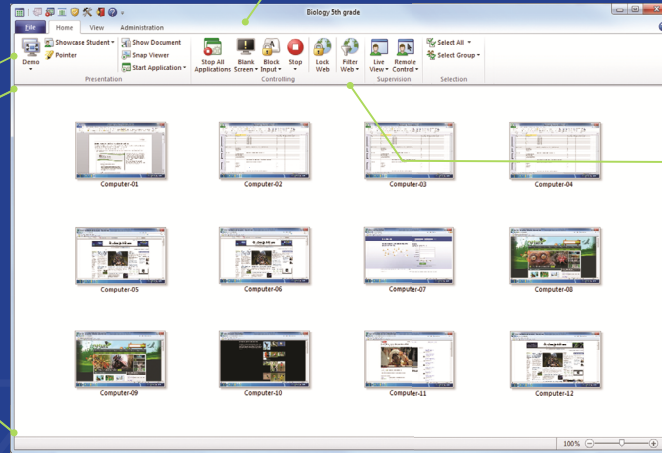


NETOP Vision Pro

Stop every computer at once
- "eyes on me" in an instart

Share your screen or
a student's screen
with the whole class

Monitor every screen at
a glance or enlarge for
a detailed live view



Limit internet browsing
to a list of specific
websites

Keep students on-task and safe in the digital classroom with Vision, an easy-to-use classroom monitoring solution proven to improve student performance and learning outcomes.



HOME



SCHOOL



Focus Attention



Increase Efficiencies



Improve Performance



Customize Instruction

TRY IT FREE

<https://www.netop.com/vision/features/>

Save time, enhance learning, both inside and outside of the browser

Monitor and modify behavior.

See all student activity in real-time and guide activity with one click.



Demo

Give every student a front-row seat, presenting lessons directly on student computers.



Showcase Student Screens

Build confidence when students share their work on every computer in class.



Pointer

Annotate lessons in any application with more than 20 shapes and highlighters.



Start Application

Save time by launching the application on every student computer simultaneously.



Kiosk Applications

Limit students' computer use to programs you open for them. Students can't exit, which is ideal during tests.



Supervise the class

See everything your students see on their computers. At a glance, see who is on-task and who needs assistance.



Class Wide Remote Login

In single sign-in environments, log in all computers with one click, from your desk.



Blank Screens

Focus student attention during class or while giving directions by blanking computer screens.



Lock Web

Turn web browsing on or off for one student or the whole class from the teacher's computer.



Web Filter

Easily create lists of teacher-approved websites or blocked sites right from your browser.



Live View

See any student screens in real time via a high-quality, larger window.



Shutdown and wake-up

Shut down, start, or restart any or all classroom computers from the teacher's station.



Remote Control

Take command of any classroom computer and remotely assist students for personalized instruction.



TeachPad

This easy-to-use five-button control pad allows educators to access Vision's core features with the push of a button.



Vision at Hand

Monitor your classroom from any web-enabled smart device with Vision at Hand.



Flip the classroom

Create web-based assessments for use in class or after school with Vision Learning Center — perfect for blended learning and flipped classrooms.

“Vision is a life saver for me! I love viewing the student screens and using the blank screens feature. Vision is great because I can share my screen with the entire class to walk through project details, eliminating the need for a projector, which many students cannot see.”

—COSN, Smart Education Networks by Design (SEND) Initiative

Try it Free

<https://www.netop.com/vision/>