

NETOP®

# Vision™

## Classroom Management Software

Netop Vision Mobile is a software solution that enables teachers to remotely access their desktop computer from a mobile device.

Using Vision Mobile you can extend the full functionality of your Windows desktop computer to an iPad: the Vision Mobile solution enables you to move freely around the classroom while still easily using all the functions of your computer.

Netop Vision Mobile requires two applications:

- The Netop Vision Mobile Connector which is downloaded from the Netop website and installed on the teacher's Windows computer.
- The Netop Vision Mobile iOS app which is downloaded from the Apple App Store and installed on the teacher's iPad (supported up to iOS 10.3.3 – July 19, 2017)

This guide describes how to set up and get started with Vision Mobile.

### Install Vision Mobile Connector

1. On your teacher computer, install the Vision Mobile Connector.

Go to the **Downloads** page on netop.com (Support > Downloads) and click the **Download Vision Mobile** button.

NETOP® Classroom Management Products Results Pricing & Purchase

## Download Vision Mobile

Netop Home > Classroom Management Software > Support > Downloads > Vision Mobile

**Download Netop Vision Mobile**

Vision Mobile is the new app for teachers that puts the full power of your desktop computer onto your iPad. Now, you can move freely around the classroom while accessing all of the educational resources on your computer. When used with Vision or Vision Pro, Vision Mobile extends full functionality to the teacher's iPad, enabling teachers to guide student learning remotely.

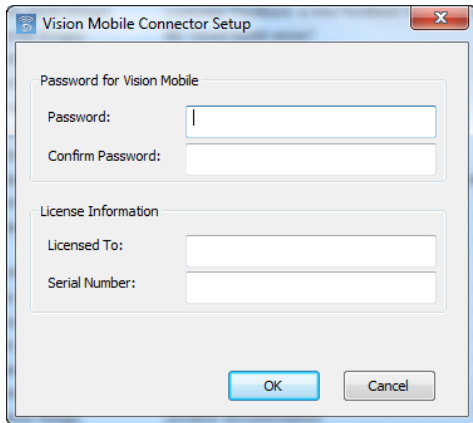
**Step 1**  
Download the Vision Mobile Connector for your PC  
[Download Vision Mobile](#)

**Step 2**  
Get Vision Mobile for your iPad  
[Available on the App Store](#)

The installation is simple in that there are no options and the program starts automatically when the installation is complete.

2. Supply license key and set a password.

On the **Start** menu, click **Vision Mobile Connector** to open below dialog box:



Type a password of your own choice to allow an iPad with Vision Mobile installed and the same password set up to connect to the computer.

**Note** The password is your protection from unauthorized access to your computer and therefore it is very important that you select a good password – and one that only you know.

Copy the serial number from your license email and paste it in the **Serial number** field.

If you do not have the serial number at hand you will be able to use the program for two weeks with the built-in serial number.

Now your teacher computer is ready and you can turn to your iPad.

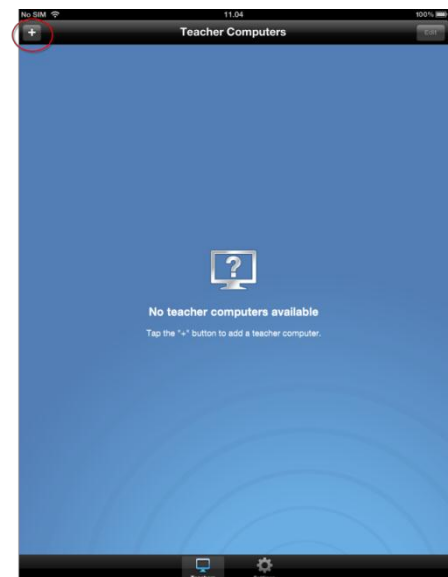
## Connect using Vision Mobile iPad app

1. On your iPad, go to Apple's App Store and download the Vision Mobile app.

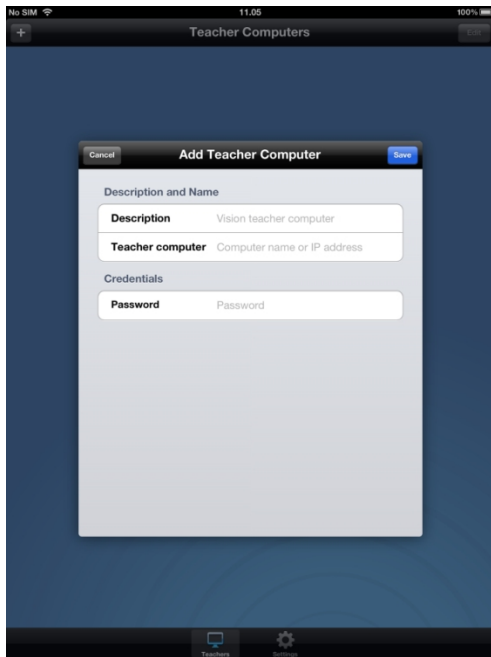
The full name is "Netop Vision Mobile"; you can also just search for "Vision Mobile".



2. Start the Vision Mobile app and on the **Teacher Computers** screen tap the plus button to add a teacher computer:



3. On the **Add Teacher Computer** screen type description, computer name and password:



When you have added the information and tapped **Save** the teacher computer is in the list of favorite computers:

**Description** can be any text that describes your computer, for example „Sue’s teacher computer“.

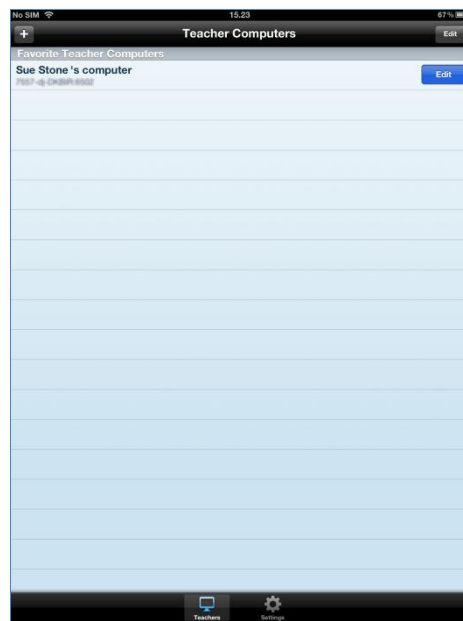
**Teacher computer** must be the actual computer name or alternatively the computer’s IP address.

**Tip** Click **Start > Computer** to see the name of your computer.

If you choose to type your computer’s IP address rather than your computer name, you will have to edit the IP address if your computer’s IP address changes at a later time.

**Password** must be identical to the password you created in Vision Mobile Connector.

**Note** The password defined in Vision Mobile Connector is your protection from unauthorized access to your computer and therefore it is very important that you select a good password – and one that only you know.



4. Tap the computer name to connect to the Vision teacher computer.  
Once connected you have access to your entire desktop from the Vision Mobile app.

## Use Vision Mobile

When connected, you can use standard iPad tap and swipe gestures to control your computer desktop:



Tap the **More** button  at the bottom right to open a menu:

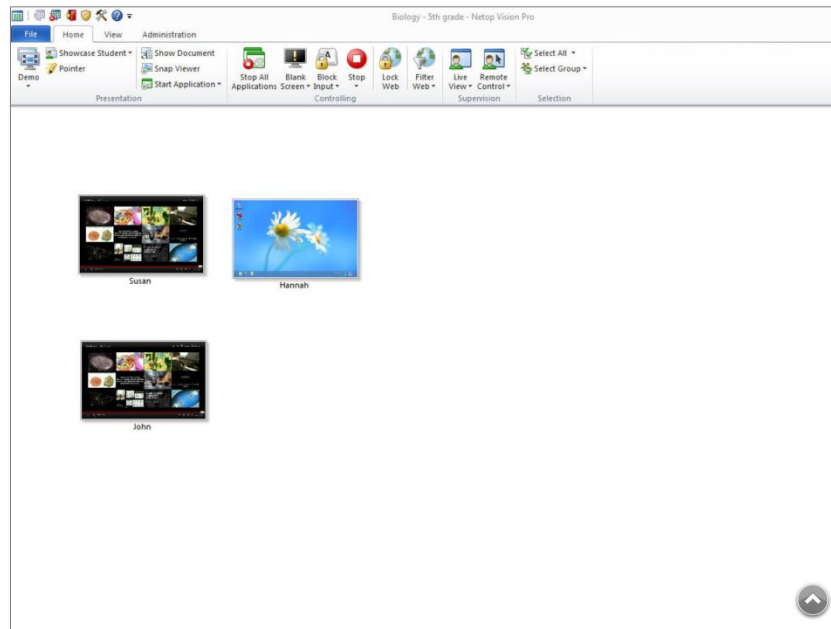


Tap the button to the left to open a menu that enables you to disconnect from the teacher computer:

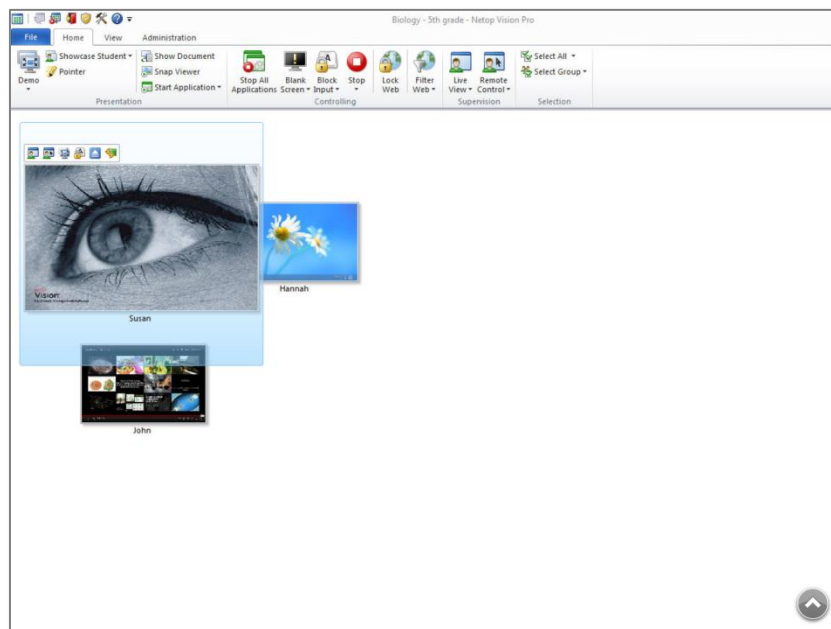


## Use Vision Mobile with Vision

When you start Vision on your teacher computer where you installed the Vision Mobile Connector, Vision Mobile on your iPad enables you to access Vision features like you were actually sitting in front of your computer:



For example, this could be to use **Blank Screen** on one of the student computers:



Netop classroom management solutions offer a complete set of feature-rich tools that allow teachers to share computer screens across the entire classroom, supervise student computer activity, control use of the internet and applications and evaluate and mentor student progress. For more information, see [www.netop.com](http://www.netop.com).