



Learning Center

User Replicator

Contents

1. Introduction	2
1.1. User Replicator requirements	2
2. Creating users in Learning Center from the Active Directory	3
2.1. Process File	3
2.2 Users Column Mappings	3
2.3. Replication Preview	4
3. Post-processing work in the Learning Center	6
4. Setting up scheduled replication	7
5. Reference	10
5.1. Process File tab	10
5.2. User Column Mappings tab	11
5.3. Replication Preview tab	12
5.4. Replication Result tab	14
5.5. File and Help menu	14

1. Introduction

The User Replicator User’s guide describes how to extract user data from an existing Active Directory and to import into Learning Center as the basis for student and teacher users.

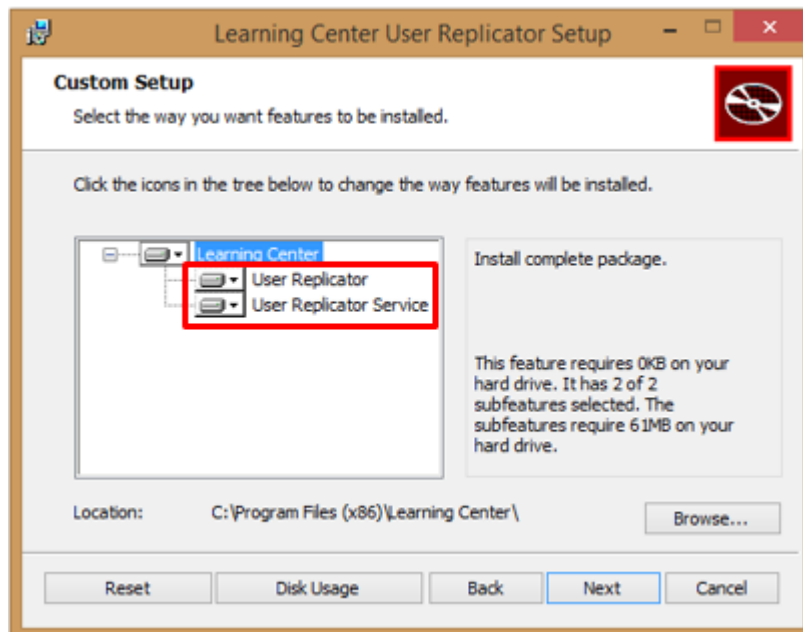
The guide is written for the school IT administrator and focuses on helping him accomplish the task of ensuring that all users have appropriate credentials to be able to log in.

1.1. User Replicator requirements

The User replicator tool must be installed on a computer with Windows 7 or later. The computer must be on the same network as the Active Directory server (AD server) or have access to the Active Directory server.

The person using the tool needs a Learning Center username and a password and must have an Admin role in Learning Center.

If the User Replicator is to run as a service at fixed intervals the complete package must be installed: During installation, make sure that both User Replicator and User Replicator Service are selected.



2. Creating users in Learning Center from the Active Directory

2.1. Process File

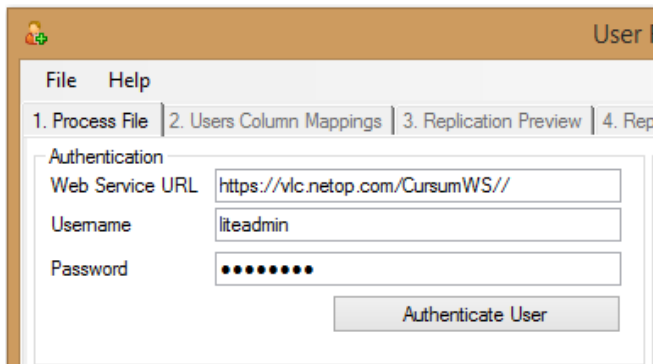
Assuming that the **User Replicator** is already installed in your computer, the first step is to authenticate the IT administrator’s username and password.

To authenticate:

1. Type a Learning Center username and a password under **Authentication** on the **Process File** tab.

The Web Service URL is always <https://vlc.netop.com/CursumWS//>

2. Click the **Authenticate User** button and wait until user is authenticated.



After authenticating the user, the next step in replication is to process the users file.

To process users file:

1. Under **Process Users File**, in the **Provider** list select **Active Directory**.
2. In the **Filter**, select what to retrieve from the AD: **All Users**, **OU Selection** or **Group Selection**.
3. Click **Process the Selected Active Directory Filter** button.

This automatically opens the **User Column Mappings** tab.

2.2 Users Column Mappings

The **User Column Mappings** tab enables you to review and modify data before you import to Learning Center.

To modify user properties:

1. Double-click on the appropriate data source column field.
2. Select the correct user property from the dropdown list.

Generally the following fields have default values that should be reviewed and possibly changed before the import:

Column Property name	Default value	Description
Password	password	This is the default password that users will be given in Learning Center. As a general recommendation, select a password that users can easily remember and advise them to change this when they first log on to Learning Center.
UserLCID	EN	The default language in Learning Center. Possible values are: CZ, DE, NL, FI, IT, JP, RU, ES, SV
DefaultRoleID	1	This is the role the imported users will have by default in Learning Center. 1 = student role 2 = teacher role 3 = admin role
Status	1	This is the default state the imported users will have by default in Learning Center. 0 = Inactive 1 = Active

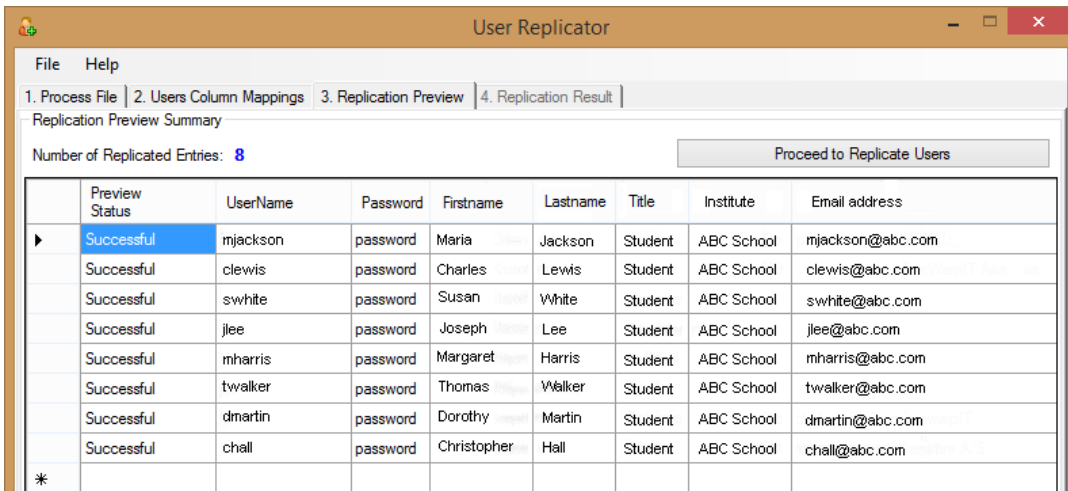
All other fields can be left as they are.

2.3. Replication Preview

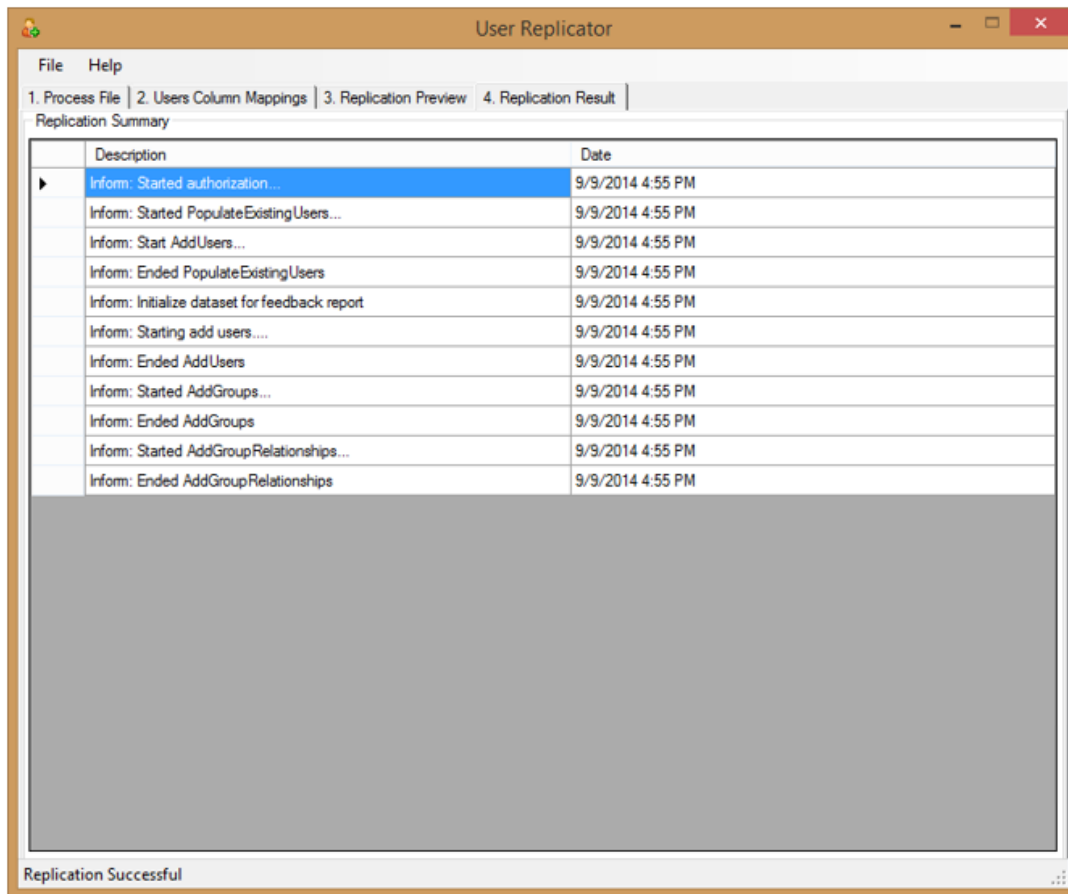
The **Replication Preview** tab gives a preview of the status of the data to be replicated.

To preview users:

1. Click **Preview Users** button.
2. Wait for the preview to be processed. This automatically displays the **Replication Preview Summary**.



Click **Proceed to Replicate Users** button. This automatically opens the **Replication Result** tab.



The **Replication Result** tab displays an overview of the replication process.

3. Post-processing work in the Learning Center

Manage users





<input type="checkbox"/>		USERNAME	FIRSTNAME	LASTNAME	EMAIL ADDRESS	ROLE ^
<input type="checkbox"/>		jgo@truewarpit.com	James	Smith	jgo@truewarpit.com	Admin
<input type="checkbox"/>		clewis	Charles	Lewis	clewis@abc.com	Student
<input type="checkbox"/>		chall	Christopher	Hall	chall@abc.com	Student
<input type="checkbox"/>		dmartin	Dorothy	Martin	dmartin@abc.com	Student
<input type="checkbox"/>		jlee	Joseph	Lee	jlee@abc.com	Student
<input type="checkbox"/>		mharris	Margaret	Harris	mharris@abc.com	Student
<input type="checkbox"/>		mjackson	Maria	Jackson	mjackson@abc.com	Student
<input type="checkbox"/>		swhite	Susan	White	swhite@abc.com	Student
<input type="checkbox"/>		twalker	Thomas	Walker	twalker@abc.com	Student
<input type="checkbox"/>		bwilson	Barbara	Wilson	bwilson@abc.com	Teacher

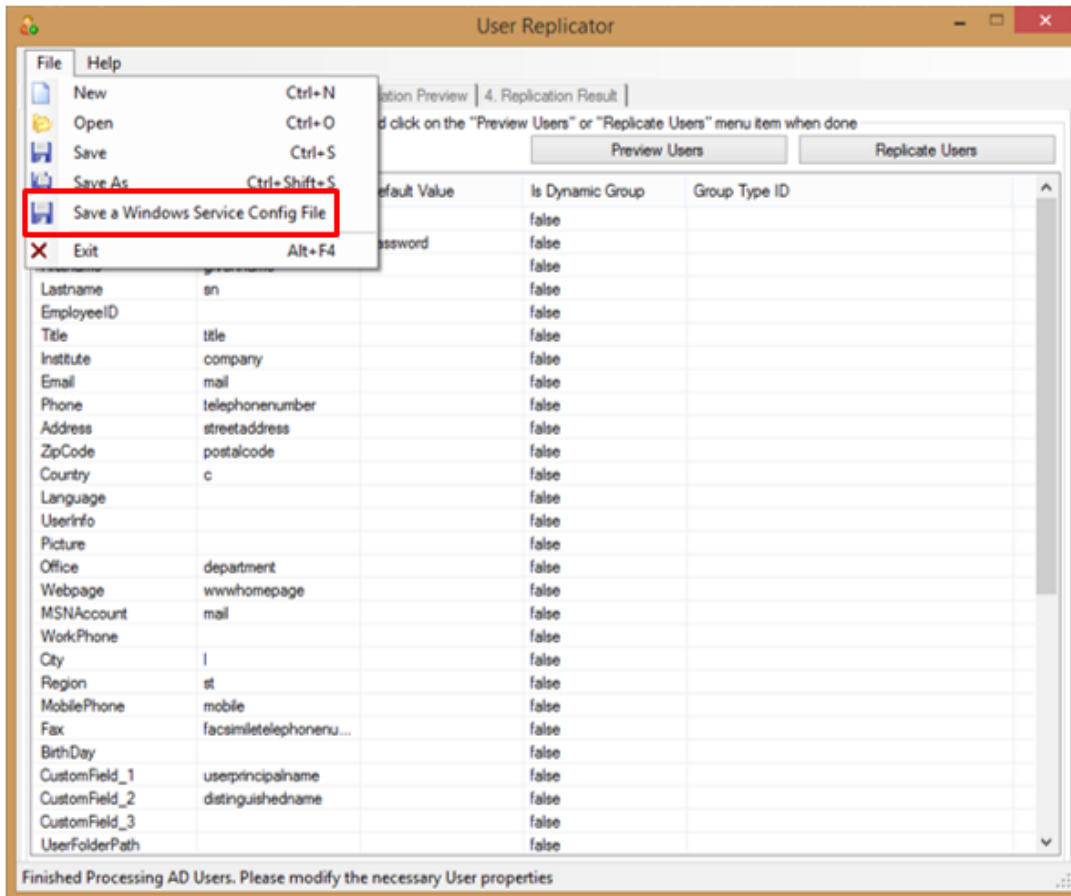
Page size:
20 items in 2 pages

Now, the replicated users have been added to **Leaning Center**. For this example, the replicated users all have role = student.

4. Setting up scheduled replication

Note: To set up scheduled replication of the complete package, both User Replicator and User Replicator Service must be installed.

When you have set up the User Replicator as you want it to work with respect to extract from AD and subsequent import to Learning Center you can save your settings as a Windows Service configuration file:

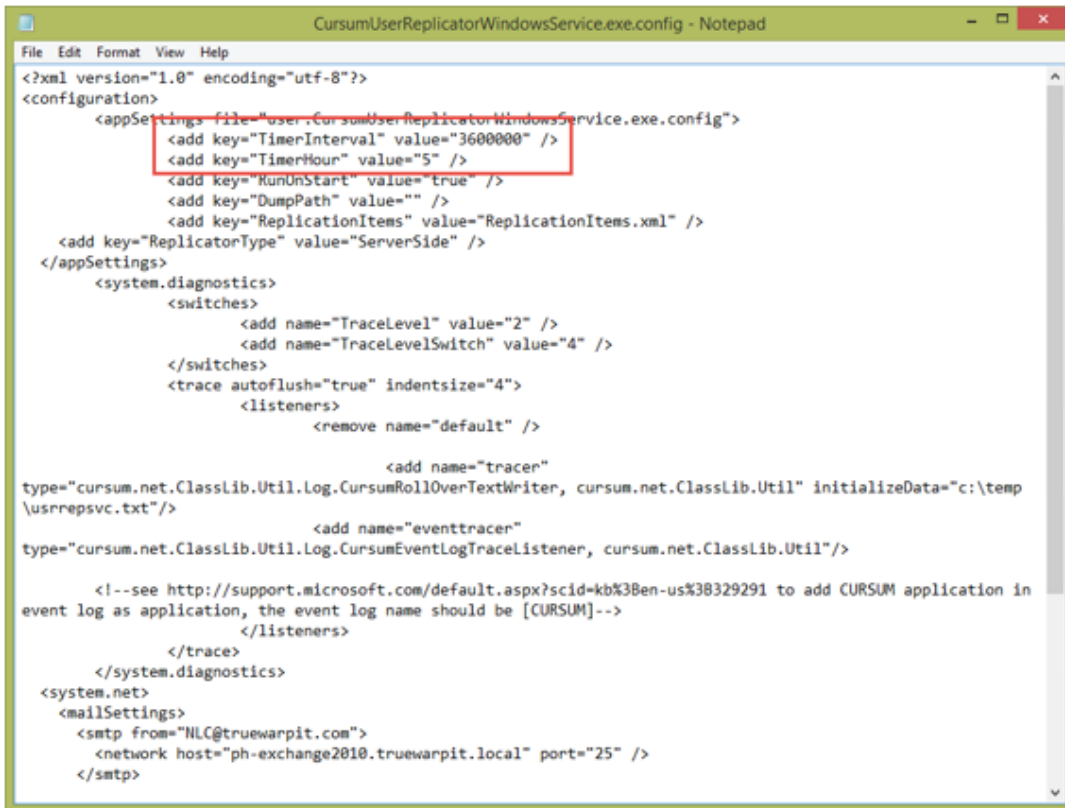


This will update the file called ReplicationItems.xml in this folder:

Program Files > Learning Center > User Replicator Windows Service.

Note: You need to have Full Access to this file to be able to save from the User Replicator tool.

The next step is to define replication intervals. This is done by editing the CursumUserReplicatorWindowsService.exe.config file in the folder listed above. The file is quite long but you only need to edit two values: the value for TimeInterval and the value for TimerHour:



```
<?xml version="1.0" encoding="utf-8"?>
<configuration>
  <appSettings file="user.CursumUserReplicatorWindowsService.exe.config">
    <add key="TimerInterval" value="3600000" />
    <add key="TimerHour" value="5" />
    <add key="RunOnStart" value="true" />
    <add key="DumpPath" value="" />
    <add key="ReplicationItems" value="ReplicationItems.xml" />
    <add key="ReplicatorType" value="ServerSide" />
  </appSettings>
  <system.diagnostics>
    <switches>
      <add name="TraceLevel" value="2" />
      <add name="TraceLevelSwitch" value="4" />
    </switches>
    <trace autoflush="true" indentsize="4">
      <listeners>
        <remove name="default" />
        <add name="tracer"
type="cursum.net.ClassLib.Util.Log.CursumRollOverTextWriter, cursum.net.ClassLib.Util" initializeData="c:\temp
\usrrepsvc.txt"/>
        <add name="eventtracer"
type="cursum.net.ClassLib.Util.Log.CursumEventLogTraceListener, cursum.net.ClassLib.Util"/>
      </listeners>
    </trace>
  </system.diagnostics>
  <system.net>
    <mailSettings>
      <smtp from="NLC@truewarpit.com">
        <network host="ph-exchange2010.truewarpit.local" port="25" />
      </smtp>
    </mailSettings>
  </system.net>
</configuration>
```

TimerInterval

Interval is in milliseconds.

If you want the update to run daily, set the interval to 86400000.

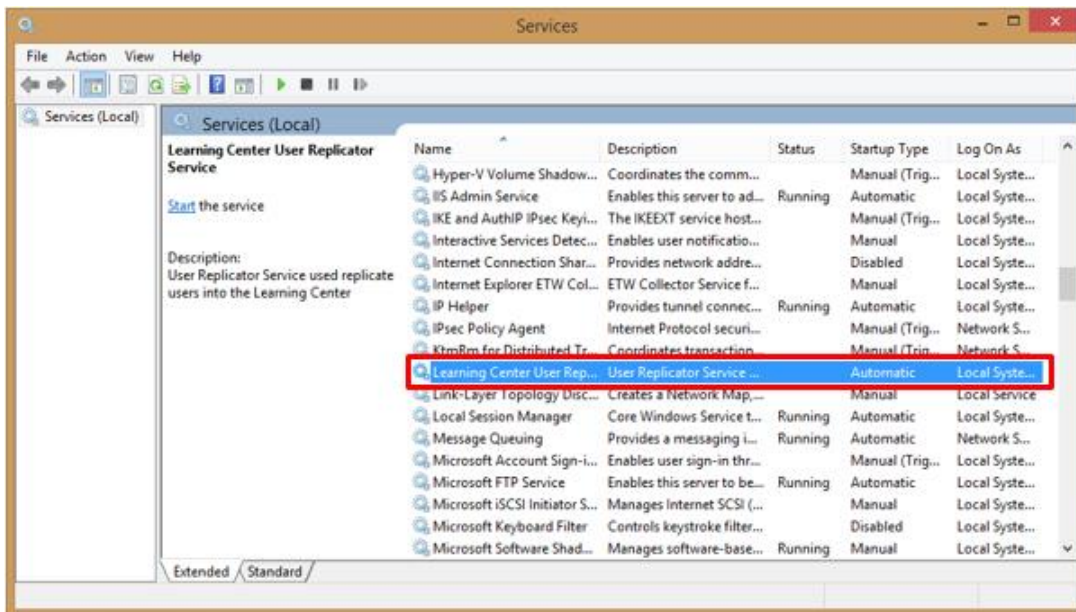
If you want the update to run weekly, set the interval to
7x86400000=604800000

The maximum value you can set for Time Interval is 2147483647 milliseconds which translates to 24.8 days.

TimeHour

Using a 24 hour clock, 5 means 5 AM and 17 means 5pm.

Third and last step is to start the service: From Administrative Tools, open Services and locate Learning Center User Replicator Service:



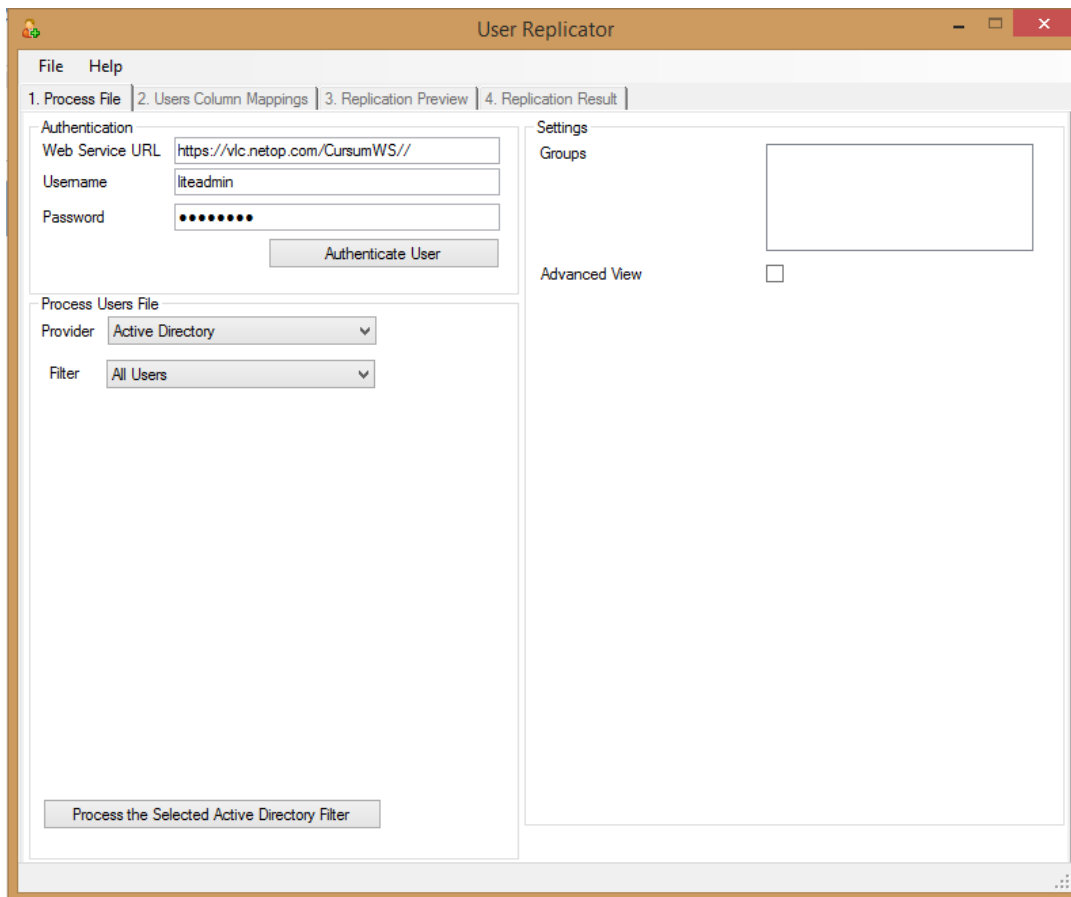
Right-click the service and select **Start**. The status now changes to **Running** and will run according to xml file and the config file described above.

The replication will run once when the service is started; the following activation will be according to the config file.

When the service is running log files are created in the Temp folder; they are named: usrrpsvc_<time stamp>_<numbering>0.txt, for example usrrpsvc_20140924_0.txt

5. Reference

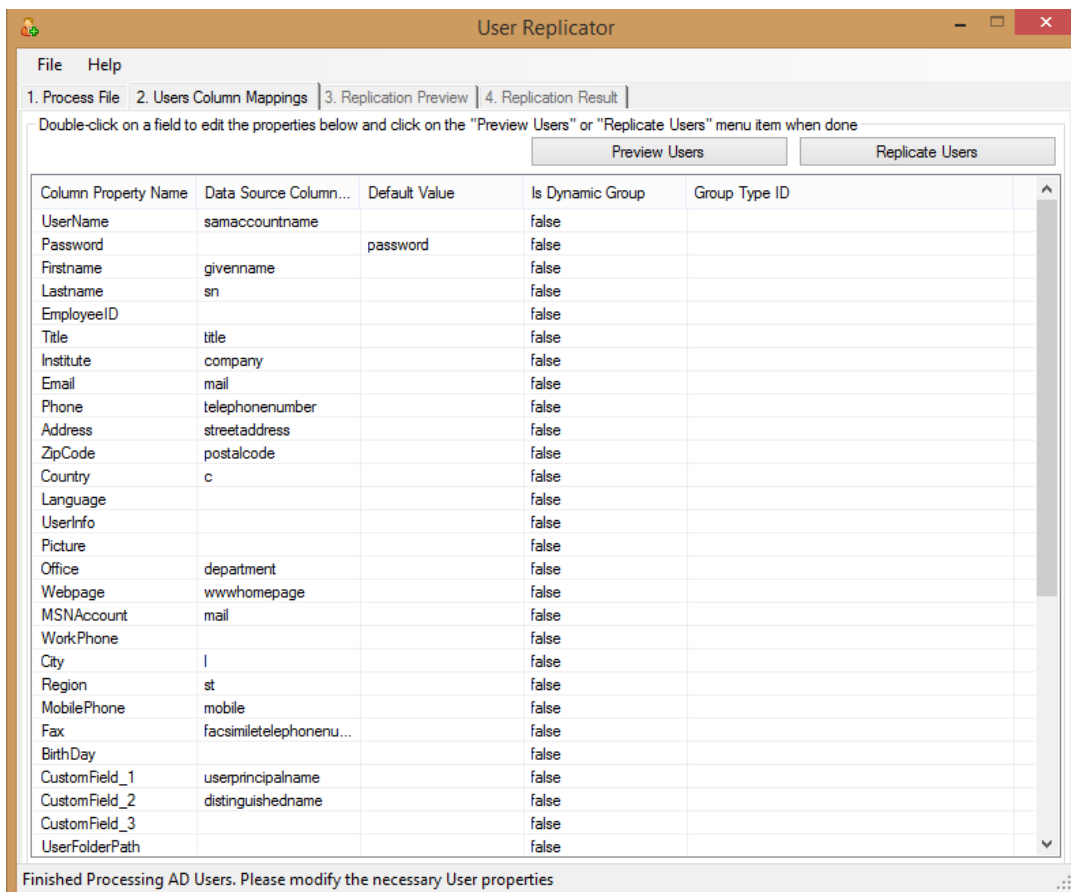
5.1. Process File tab



Entity	Entity Type	Description
Web Service URL	Textbox	Displays https://vlc.netop.com/CursumWS// by default. This is the Learning Center URL is entered.
Username	Textbox	Type the IT administrator’s valid username.
Password	Textbox	Type the matching password for the entered username.
Authenticate User	Button	Click this to authenticate the entered username and password.
Provider	Dropdown list	Displays the list of providers: CSV, Excel, XML, and Active Directory.

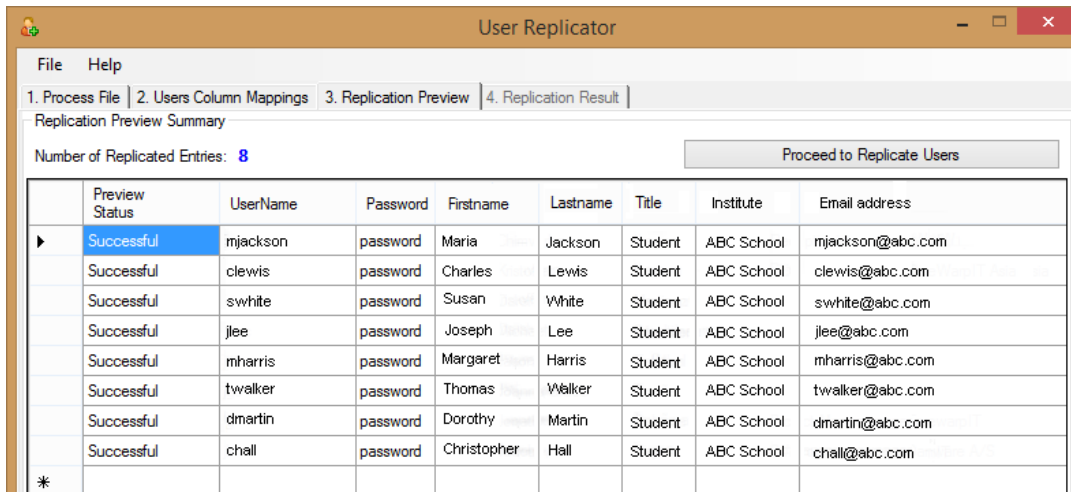
Filter	Dropdown list	Displays available filters: All Users, OU Selection, Group Selection
OU	Tree Selector	Appears only when the provider selected is OU Selection. Displays all existing organizational units.
Group	Dropdown list	Appears only when the provider selected is Group. Displays all existing groups.
Groups	Checklist	Displays available groups once filter is set.
Process the Selected Active Directory Filter	Button	Appears only when the provider selected is Active Directory. This button is clicked to process the selected filter.
Advanced View	Checkbox	Once selected, it displays the advanced view settings.

5.2. User Column Mappings tab



Entity	Entity Type	Description
Preview Users	Button	Click this to process the preview of users included in replication.

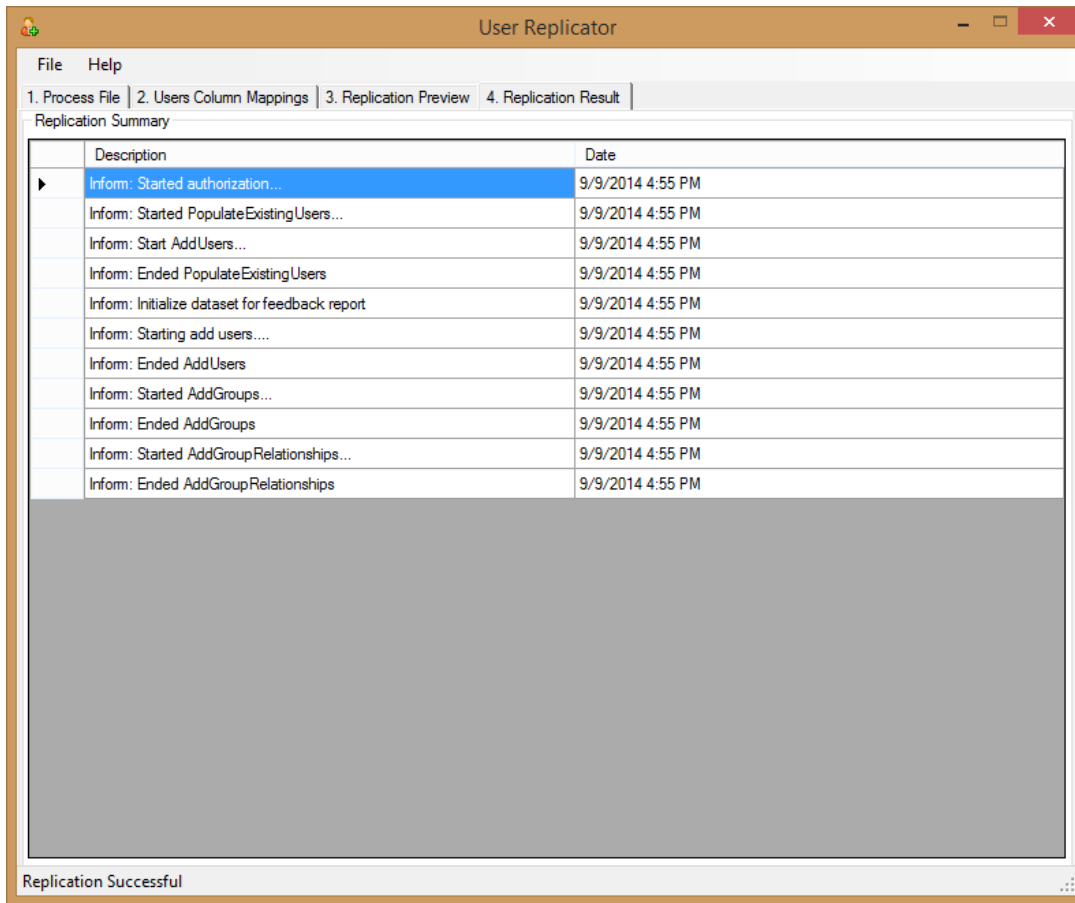
5.3. Replication Preview tab



Entity	Entity Type	Description
Number of Replicated Entries	Label	Shows the total number of entries to be replicated.
Preview Status	Column	Tells whether the replicated user is successful or has failed.
Proceed to Replicate Users	Button	Click this to proceed to the replication of users.
UserName	Column	Displays the users’ usernames
Password	Column	Displays the default password
Firstname	Column	Displays the users’ first names
Lastname	Column	Displays the users’ last names
Title	Column	Displays the users’ titles on record
Institute	Column	Displays the users’ institutes on record
Email	Column	Displays the users’ email addresses on record
Phone	Column	Displays the users’ phone numbers on record

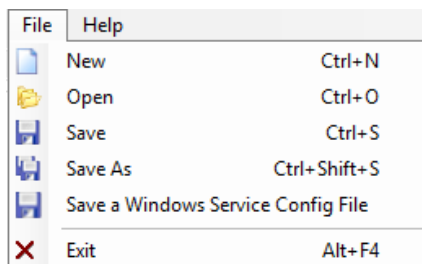
Address	Column	Displays the users’ addresses on record
ZipCode	Column	Displays the users’ zip codes on record
Country	Column	Displays the users’ countries on record
Office	Column	Displays the users’ offices on record
Webpage	Column	Displays the users’ Webpages on record
MSN Account	Column	Displays the users’ MSN accounts on record
City	Column	Displays the users’ cities on record
Region	Column	Displays the users’ region on record
Mobile Phone	Column	Displays the users’ mobile phone numbers on record
Fax	Column	Displays the users’ fax numbers on record
Custom Field_1	Column	Displays the users’ data on the assigned value for custom field_1
Custom Field_2	Column	Displays users’ data on the assigned value for custom field_2
Company	Column	Displays the users’ company name on record
Department	Column	Displays the users’s department on record
Manager	Column	
IsManager	Column	Displays ‘True’ if a user is a manager and ‘False’ if the user is not a manager
Initials	Column	Displays the users’ initials on record
User LCID	Column	Displays the default language the users’ belong to.
Default RoleID	Column	Displays the users’ default role IDs, where: 1 = student role 2 = teacher role 3 = admin role
Status	Column	Displays the users’ status, where: 0 = inactive 1 = active

5.4. Replication Result tab



Entity	Entity Type	Description
Description	Column	Displays the replication summary.
Date	Column	Displays exact time and date of replication summary.

5.5. File and Help menu



Entity	Entity Type	Description
New	Sub-menu	Click this to create a new user replicator setting.
Open	Sub-menu	Click this to open a saved user replicator setting from your computer.
Save	Sub-menu	Click this to save the user replicator setting you have used in your computer.
Save as	Sub-menu	Click this to save modified user replicator setting in your computer.
Save a Window Service Config File	Sub-menu	Click this to save created settings with respect to AD. (For example: when setting scheduled replication)
About	Sub-menu	Shows a brief information about the user applicator.