

NETOP®
Vision™ PRO
 Classroom Management Software

Tips & Tricks: Launch and control applications on student computers

Netop Vision allows you to launch applications on all student computers simultaneously. With Kiosk mode, you draw the attention of students to selected applications. Students can only use the programs you have selected for them. Avoid distractions and ensure that the entire class learns together. Excellent for class work and tests

For example, when you start Microsoft Word in Kiosk mode, students are limited to using that application. The students see only Word on their desktops. They do not have access to other applications: the start menu is not available; the taskbar at the bottom of the screen is locked; and students cannot launch Windows Explorer to search for other programs.

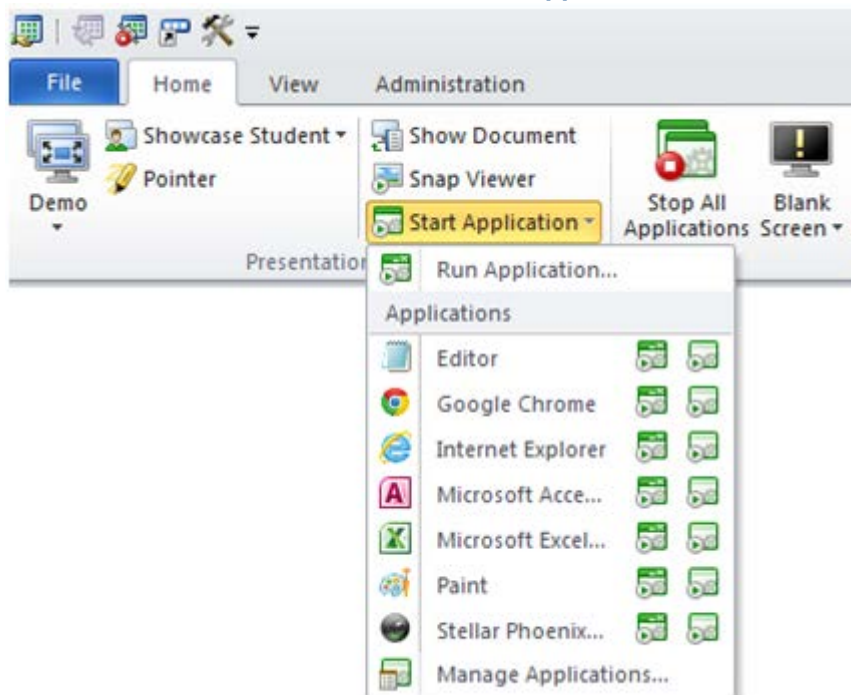
In our Tips & Tricks we show you step by step how to:

1. **Start applications on student computers (standard and Kiosk mode)**
2. **Close all applications running on student computers**
3. **Share and open a common document with the entire class**

1. Start applications on student computers (standard and Kiosk mode)

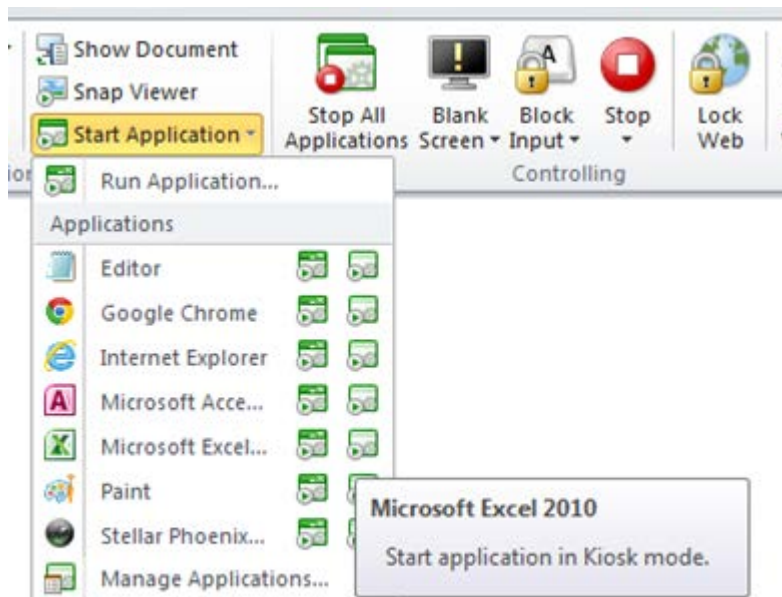
When you launch an application on student computers, you can let students have general access to their computers while they use the application (Standard mode), or you launch the application in Kiosk mode. Kiosk mode allows students unlimited use of the selected application, but prevents them from accessing other areas of their computer. This ensures that students' attention is directed to the shared application.

- On the **Home** tab click the button **Start Application**.



- All applications that you have added to your list under **Manage Applications** can be started either in standard mode or in kiosk mode.
- Next to each application in the list there is an icon for each mode. Launch the desired application by clicking on the relevant icon. The application is started on all student computers in the classroom simultaneously.

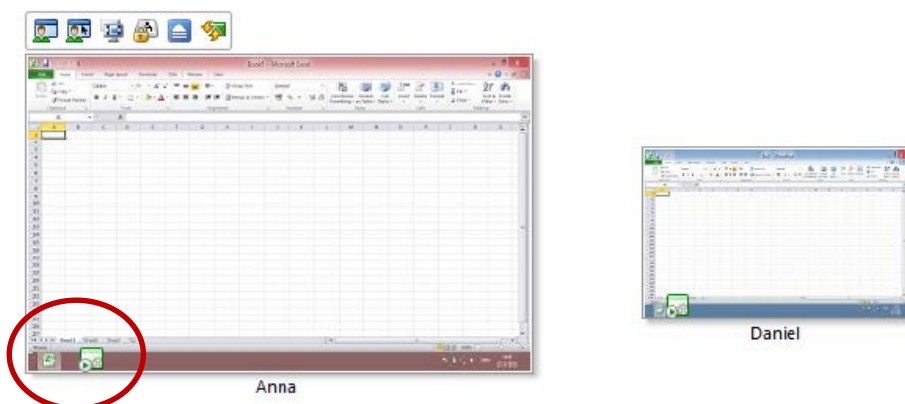
Tip: You can launch applications on an individual student computer as well as on a group of students' computers. To do this select the relevant student computers in the Vision dashboard before you start the application.



- Click on the left icon to start the application in **Standard** mode.
- Click on the right icon to start the application in **Kiosk** mode.

Tip: You can start more than one application in Kiosk mode. The students can switch between the different applications but have no access to other areas of their computers.

When you start a program in Kiosk mode, a Kiosk icon appears on the student computers in the dashboard.



Turn off Kiosk mode

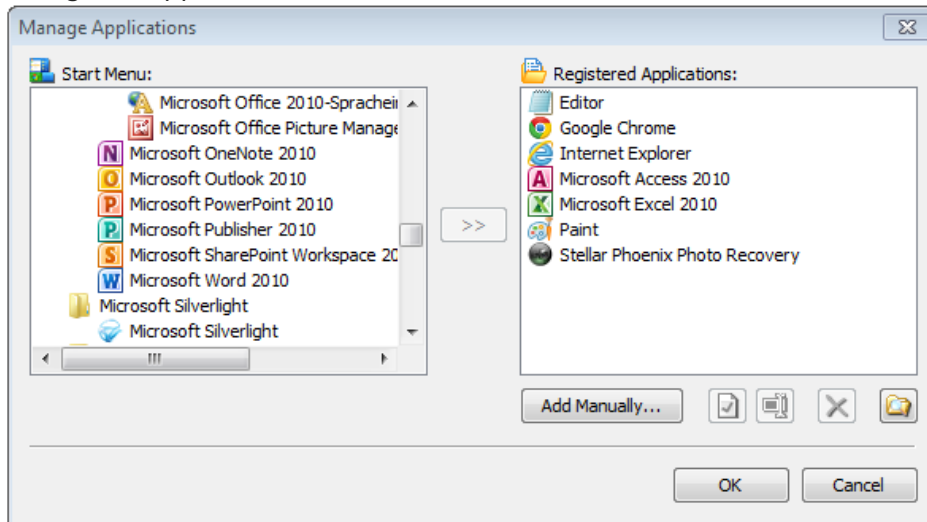
You can switch an application from Kiosk mode to Standard mode without closing the application. For example, during a lesson using Microsoft Word you may start the program in Kiosk mode to keep the class on track. When you finish your lesson, you can turn off Kiosk mode without closing the program. Students can continue working in Word or, if they choose, start other programs.



- On the **Home** tab click the **Stop** button

How you add applications to your own applications list

- To add frequently used applications to your list, click **Manage Applications**. The following dialog box appears:

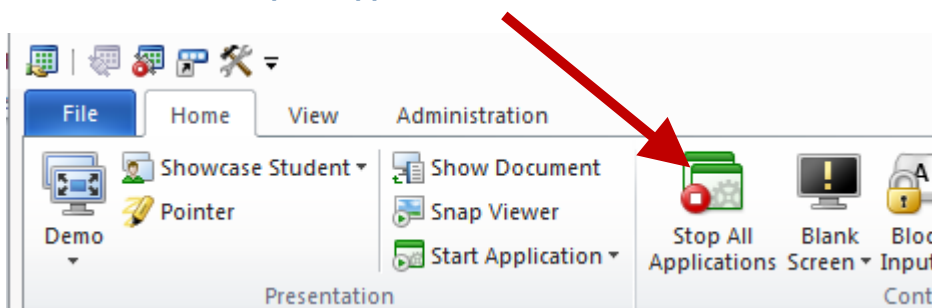


- Select an application in the list to the left and click the button with the arrows to add it to the list **Registered Applications** to the right. Click **OK**.

2. Close all applications running on student computers

You can close all the programs running on student computers at one time. This is helpful when you want to prepare for the next part of the lesson or the next class period.

- Click the button **Stop All Applications**.

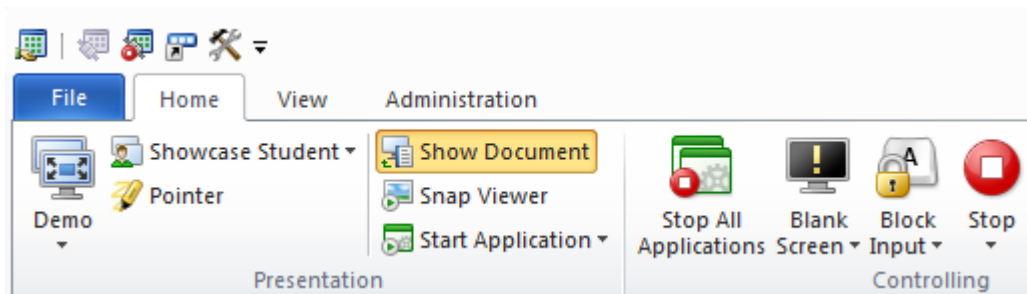


- If students have any work in progress, they will be asked to save it before the application closes.

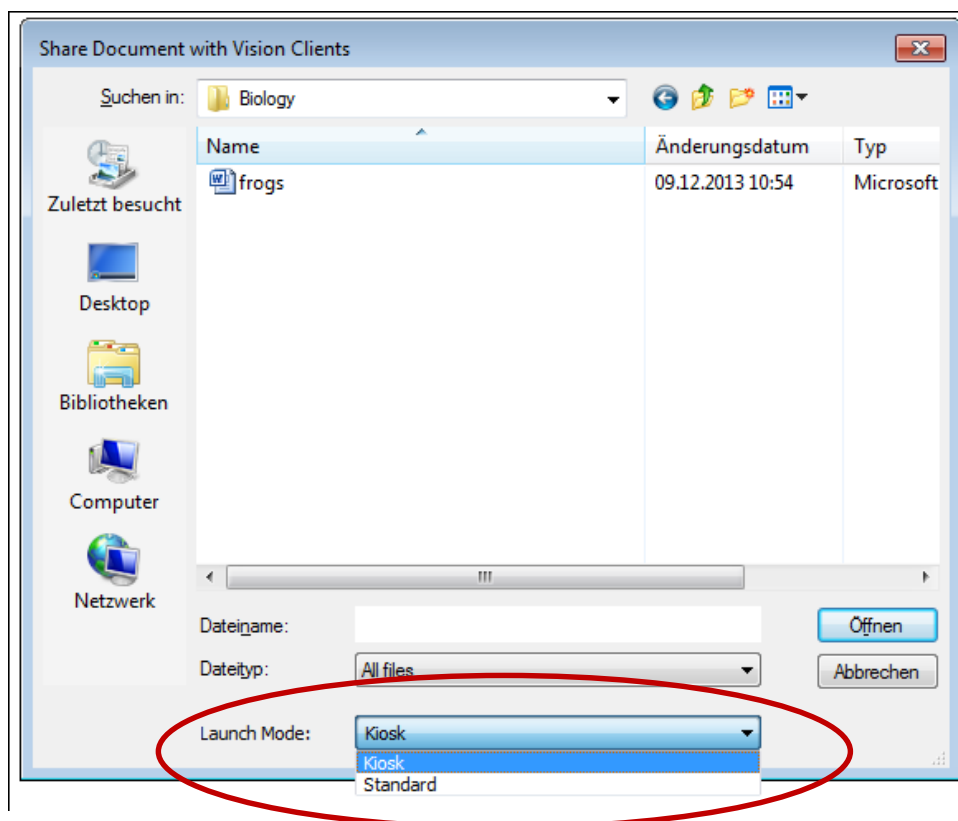
3. Share and open a common document with the entire class

You can also open documents that you want to share with your classroom. This is helpful when you want to distribute a worksheet or other assignment electronically. You can quickly start with the lessons and avoid unnecessary waiting. All your students are at the same place, at the same time and ready to start.

- On the **Home** tab click **Show Document**.



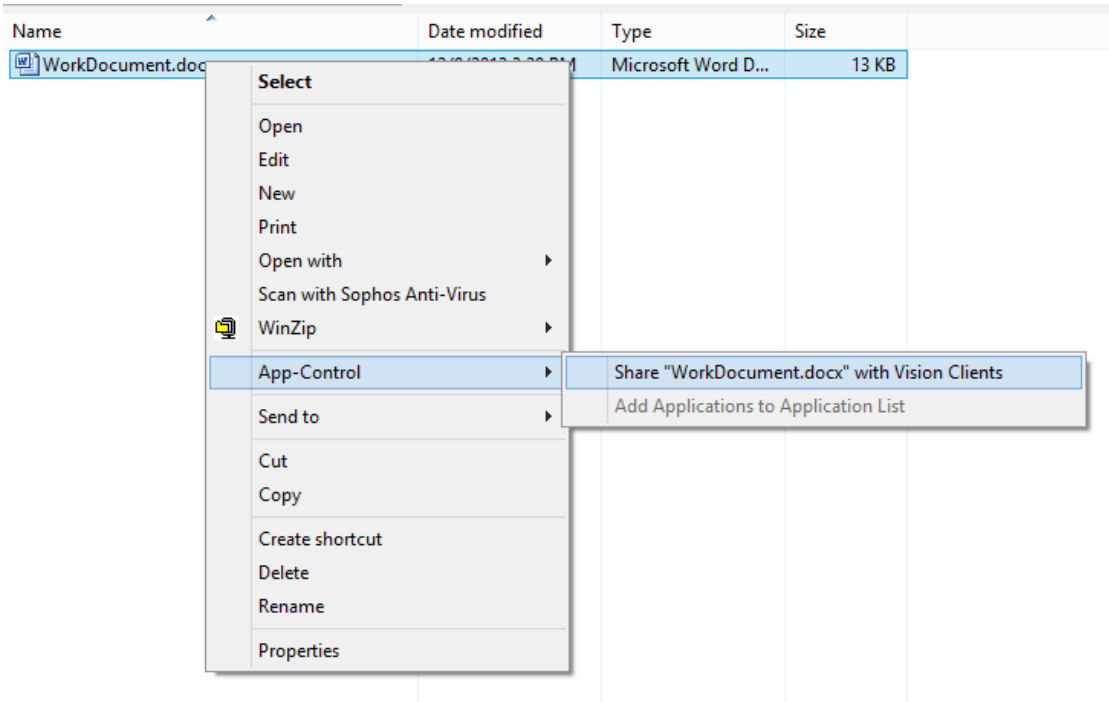
- Select the document you want to open, and then select the launch mode of the application: **Standard** mode or **Kiosk** mode.
- Students have their own independent copy of the document and can edit and save it.



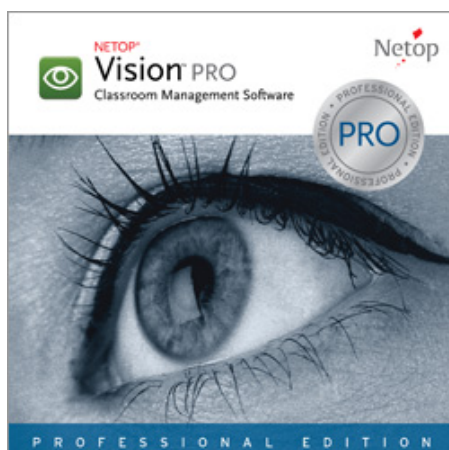
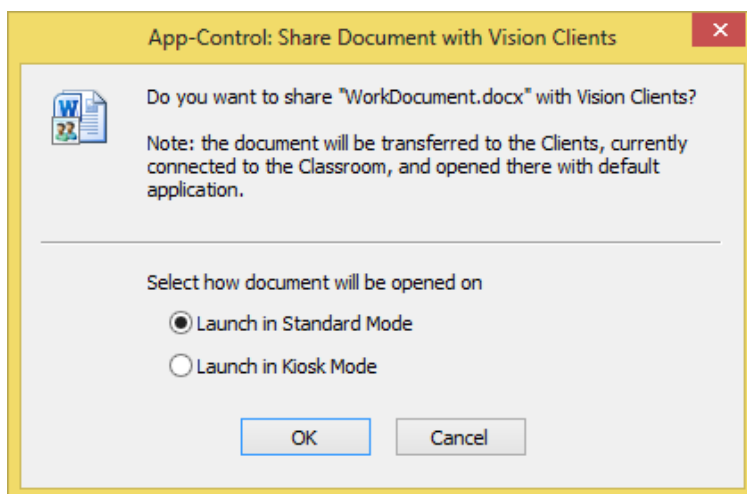
Tip: To prevent students from closing or starting applications while they work with this document, choose **Kiosk**.

Another way to share a document is from the context menu provided by right-clicking directly on the file on your computer.

- Right-click on the file and point to **App-Control** and share the document with Vision clients respectively with your students.



- Finally select the launch mode of the application: **Standard** mode or **Kiosk** mode.



If you have questions about Netop Vision Pro, contact **Netop** or a **Netop Partner** in your area.