

Tips and Tricks for Netop Vision and Netop Vision Pro

Vision Student App for iPads and Android tablets

Teachers can present their lessons from their PC directly to the student iPad and Android tablets. Teach the detailed steps of a task to the entire class, a group or an individual student. With the Vision Student Apps for iPad and Android tablets, students can easily connect with the teacher's PC to join the Vision class.

The PC-based Vision classroom supports all student devices, including iPads, Androids, Chromebooks, Macs, and PCs. Students using non-Windows devices can access the Vision classroom via the browser-based connection, while the apps for student iPad and Android tablets are available for free download on the [iTunes App Store](#) or [Google Play](#).

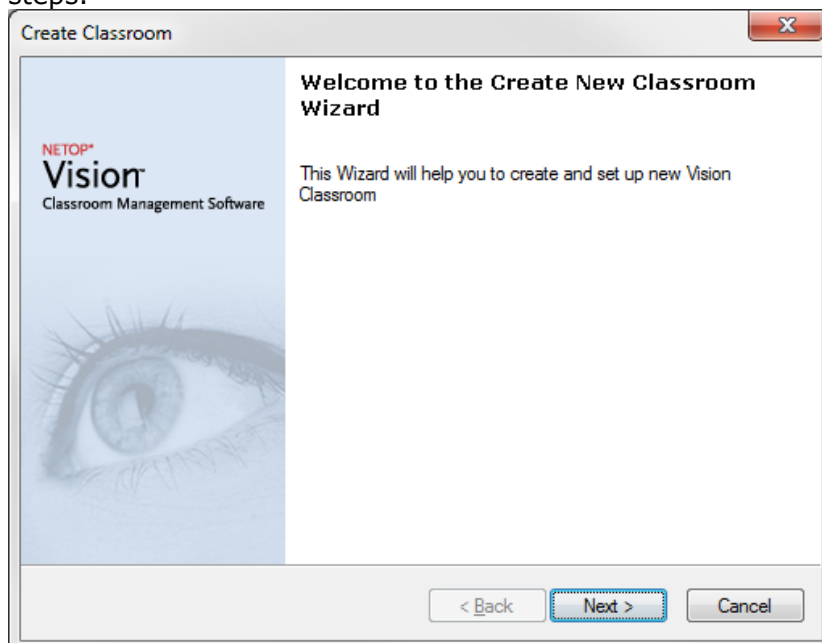
In our Tips & Tricks we show you step by step:

1. How to create a classroom for iPads and smart devices in Vision
2. How to invite students with iPads and smart devices to your class
3. How student iPad and Android tablets connect with the teacher PC using the Vision Student App

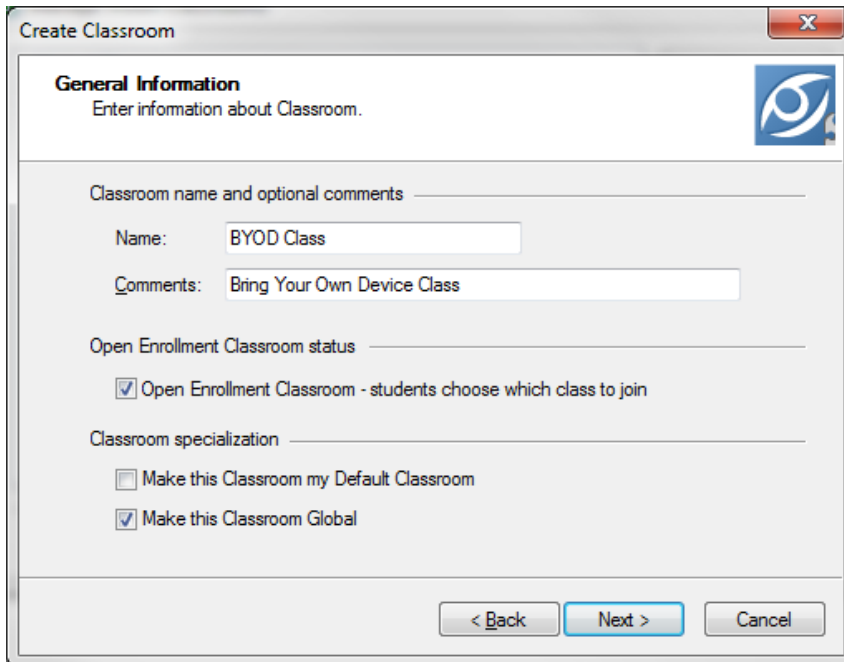
1. Create a classroom for iPads and smart devices in Vision

If the classroom has a mix of browser-based student devices, tablets, and Windows-based student modules, or if the classroom has browser-based student devices and tablets only, the classroom must be defined as an "open enrollment" classroom.

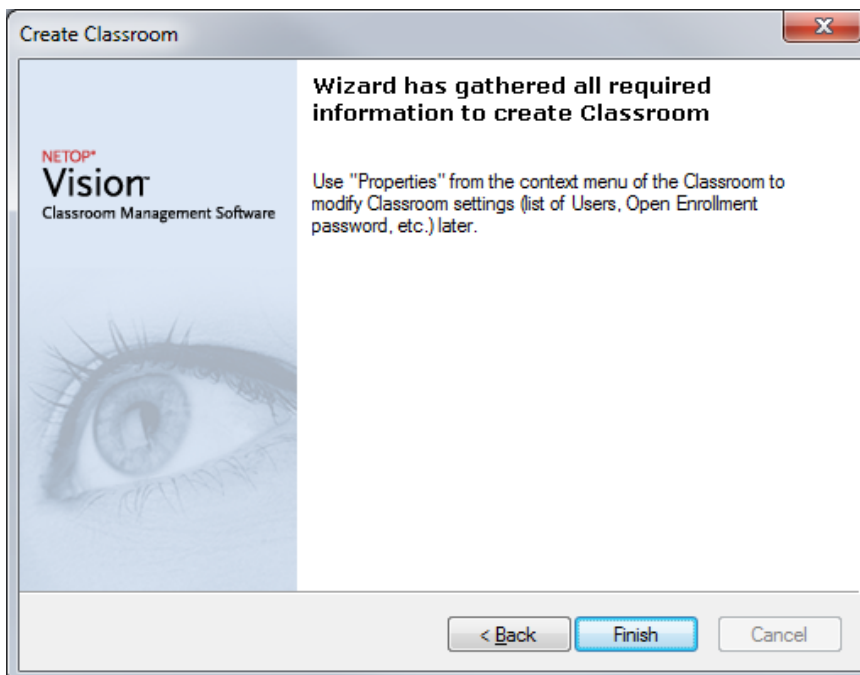
- Start by creating a new class on the teacher computer. On the **File** tab click **Classroom Manager** and then click the **New** button. The classroom wizard will guide you through the steps.



- In the **Create Classroom - General information** dialog box, type the name that you want to use for the classroom and select **Open Enrollment Classroom**.
- Review the classroom options settings for reuse of the classroom definition by other teachers (global or personal). Create a **global classroom** if the classroom is to be used by other teachers.
- Click **Next**.

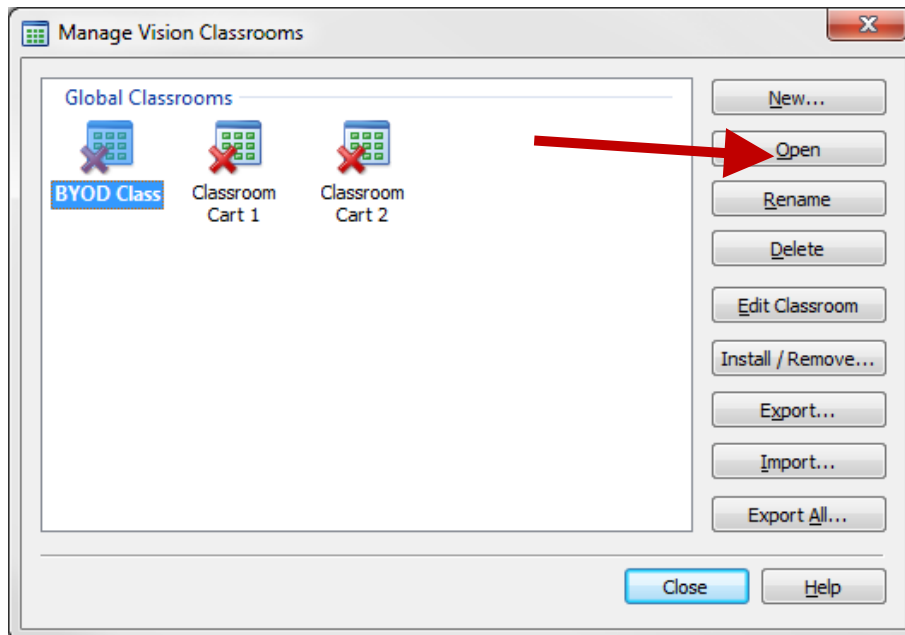


- Click **Finish** to create the classroom.

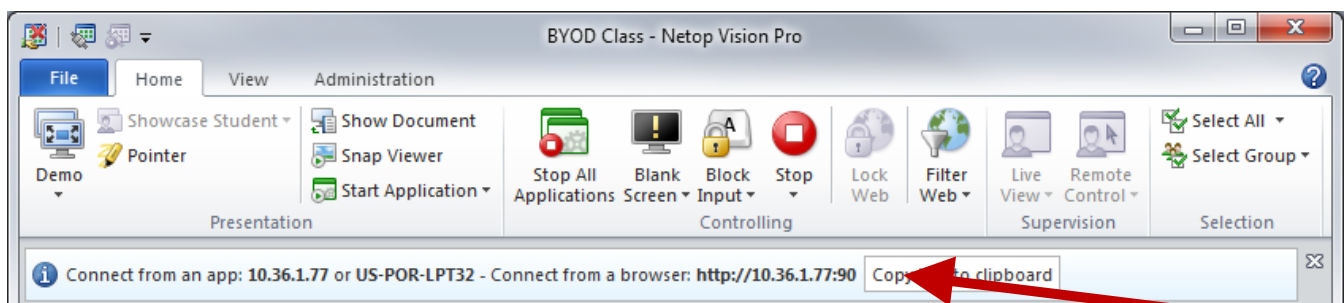


2. Invite students with iPads and smart devices to your class

- Open the Vision classroom you just created to invite students to join. On the **File** tab click **Classroom Manager**. Choose the classroom and click on the button **open**.



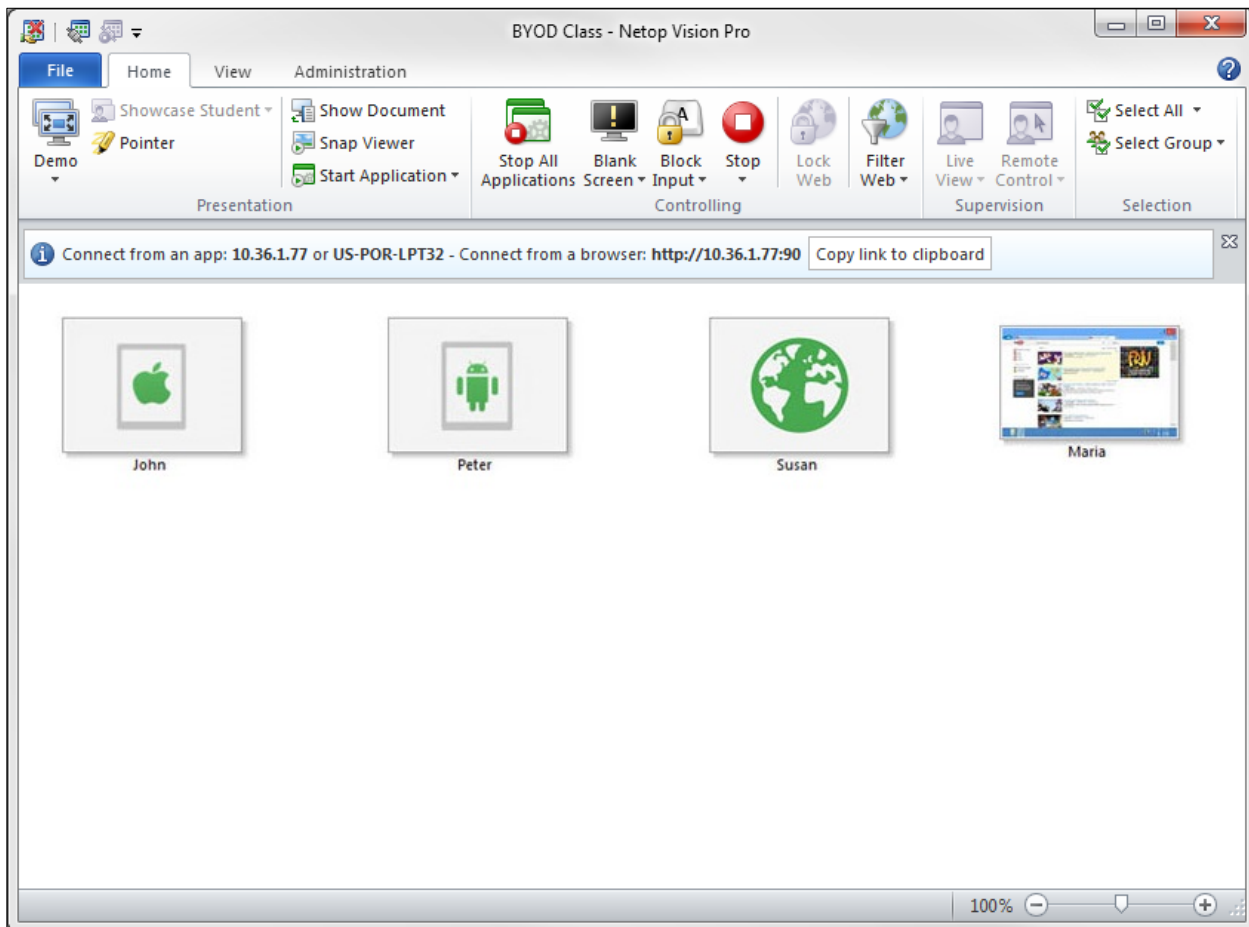
- When the teacher starts an open enrollment classroom the message bar (the area beneath the Ribbon) displays information about the teacher computer that students must use to connect.



- Students can connect to the teacher computer by typing either the teacher computer name or the teacher computer IP address (see section 3).

Note: An open enrollment classroom defined in the teacher module can have a password attached so that students must type the password before joining the classroom. Setting a password (Classroom properties) for an open enrollment classroom enhances the teacher's ability to control who joins the class.

- When students have joined the class from their iPad or Android tablet, a static picture of each browser-based student device is displayed.
- The class in the below example has two students connecting from tablets (labeled "John" and "Peter"), one student connecting from a browser (labeled "Susan") and one student connected from a Windows computer.



- You will see standard thumbnails of the screens from the students connecting from a Windows computer with the student module installed, and a static picture of any student connecting through a browser or from a smart device.
- When the student tablet device or browser-based device has joined the class, the device is ready to receive a demo from the teacher computer.

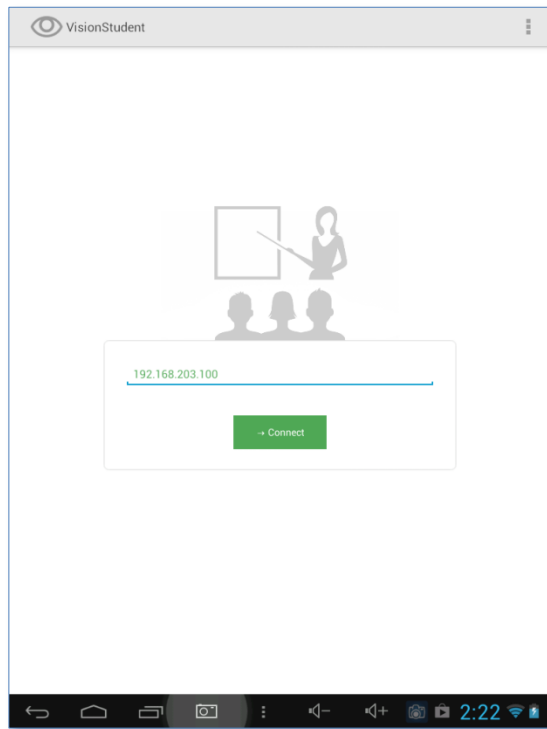
Note: For student devices with browser-based connection Vision is available with limited functionality. For students with Windows computers Vision offers full functionality.

3. How students connect with the teacher PC using the Vision Student App

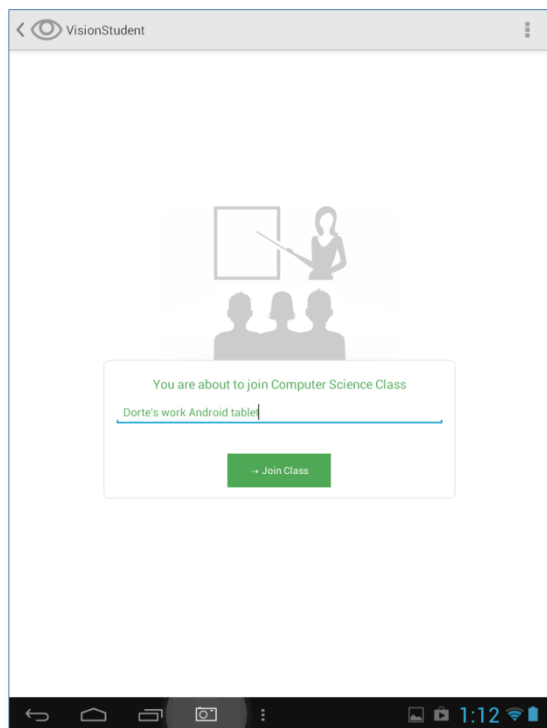
- Students must download the iPad or Android app from [Apple's App Store](#) or from [Google Play](#).
- Once downloaded, students will have the green **Netop Vision Student** icon on their tablet:



- When students open the app they must choose which teacher computer to connect to by typing the teacher computer's IP address and choosing **Connect**:

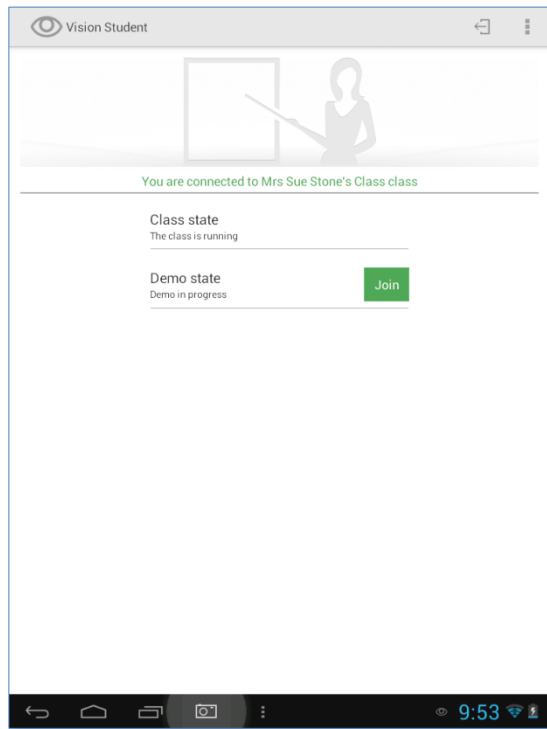


- On the next screen, students must type their name and, depending on setup, a password to join the class:



- The name will appear beneath the icon that the teacher sees in the class as shown in a previous screenshot from the teacher computer.

- Once students have joined the class they will see the “in class” screen indicating that they are now ready to receive a demo from the teacher’s computer:



If you have questions about Netop Vision or Vision Pro, contact **Netop** or a **Netop Partner** in your area.