



Tips and tricks:

Using Vision with Mobile Computers - 1:1 Computing and BYOD

Many schools are augmenting their selection of stationary computer workstations with the option to use mobile computers. Laptops and tablets (both in the 1:1 and BYOD model) offer mobility for flexible use by students and teachers at any time during instruction.

Netop Vision for Windows and Mac allows for flexible integration of mobile computers with the "Open Enrollment Classroom" function. This allows teachers to easily invite students with a few clicks to join a class. No need to browse the entire network to add student computers to a classroom.

Teaching can even happen in and out of the classroom at any time as long as students are connected to the network. This can be helpful for connecting multiple classrooms together for one presentation or test. It also gives teachers the ability to monitor classroom computers from another room.

Technical notes:

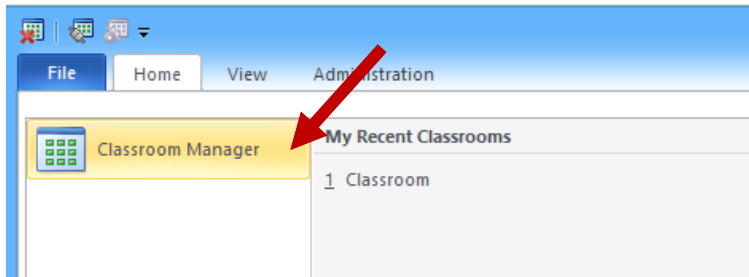
- The "Open Enrollment" option is available for Netop Vision running on Windows and Mac.
- For thin clients and session-based solutions, a classroom with "Open Enrollment" can be generated.
- The students' devices must have the student module installed and Open Enrollment must be activated. No license key is required for installation.

The following Tips & Tricks are intended to help you step-by-step in creating an open enrollment classroom and using it in your instruction.

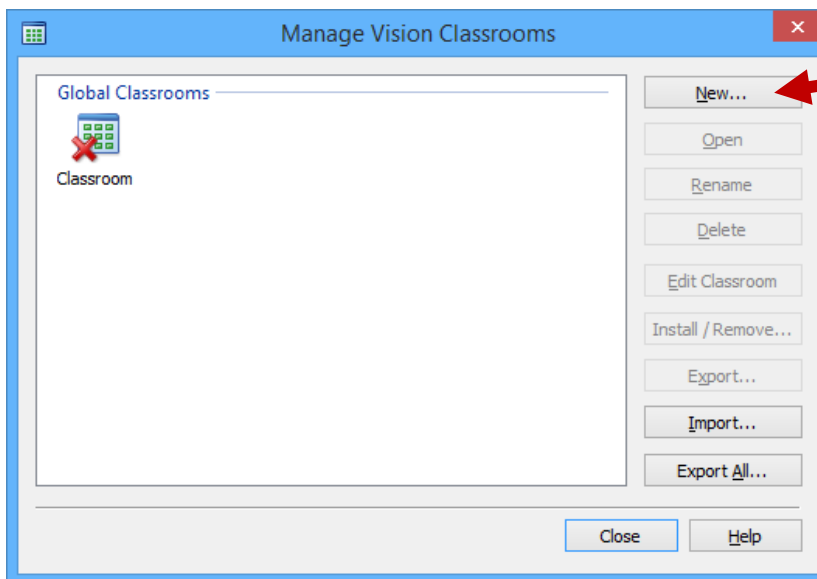
1. Create a classroom for use with open enrollment
2. Invite students to join the class
3. Learn how students join the class

1. Creating an open enrollment classroom

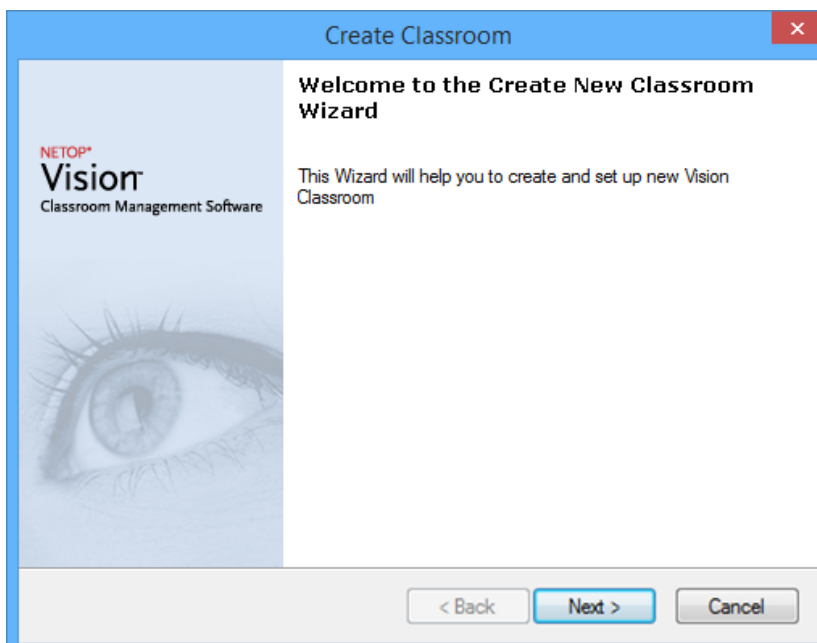
- On the **File** tab, click on **Classroom Manager**.



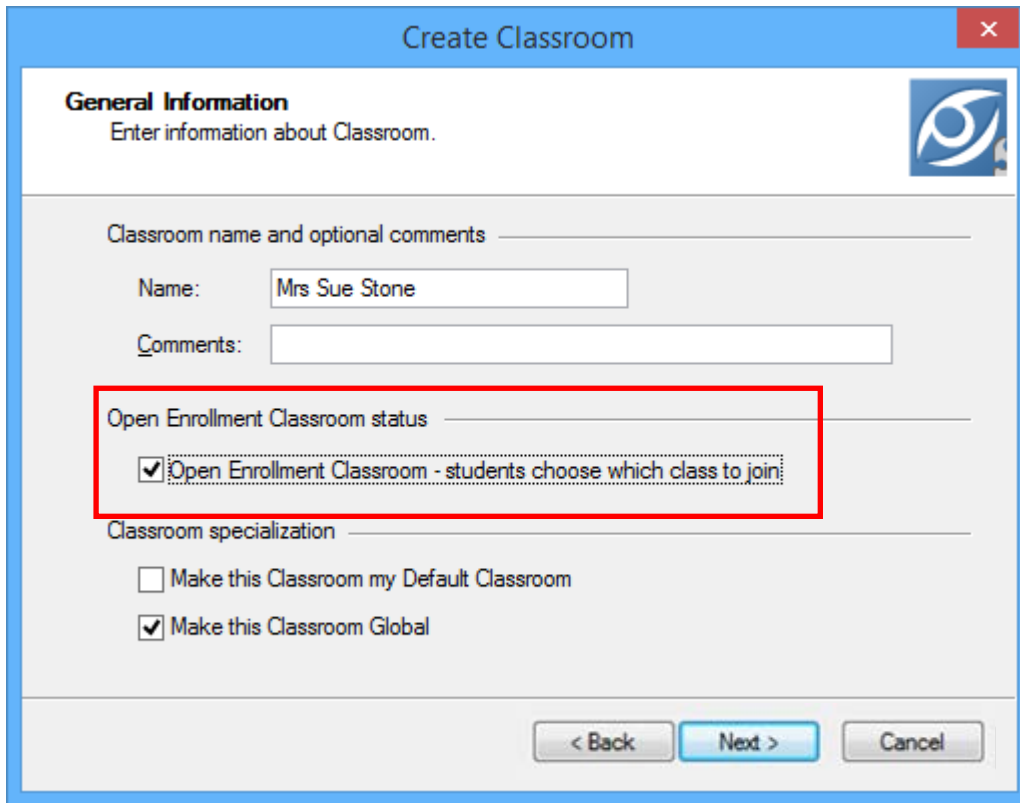
- The **Manage Vision Classrooms** window opens. Click on the **New** button.



- The **Classroom Wizard** opens to guide you through the individual steps. Click on **Next**.



- Enter your desired classroom name in the **Create Classroom - General Information** dialog window and activate the checkbox **Open Enrollment Classroom**.



Create Classroom

General Information
Enter information about Classroom.

Classroom name and optional comments

Name: Mrs Sue Stone

Comments:

Open Enrollment Classroom status

Open Enrollment Classroom - students choose which class to join

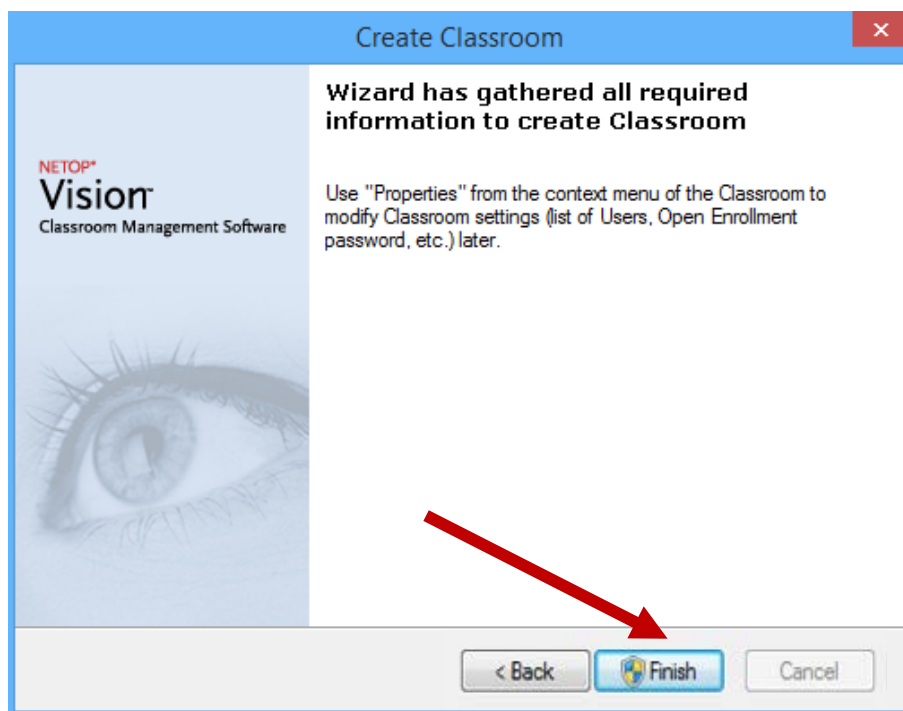
Classroom specialization

Make this Classroom my Default Classroom

Make this Classroom Global

< Back Next > Cancel

- Review the classroom options regarding potential re-use of the classroom definition by other instructors (globally or personally). Create the classroom as a **global classroom** if other teachers will be using this classroom.
- Click on **Next** and then **Finish** to create the classroom.



Create Classroom

Wizard has gathered all required information to create Classroom

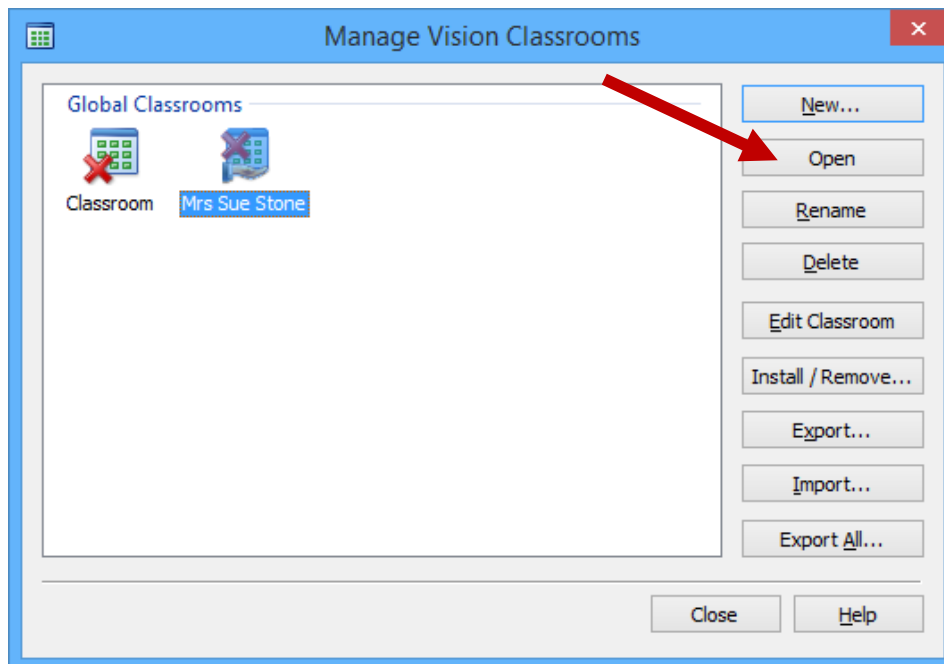
Use "Properties" from the context menu of the Classroom to modify Classroom settings (list of Users, Open Enrollment password, etc.) later.

NETOP®
Vision
Classroom Management Software

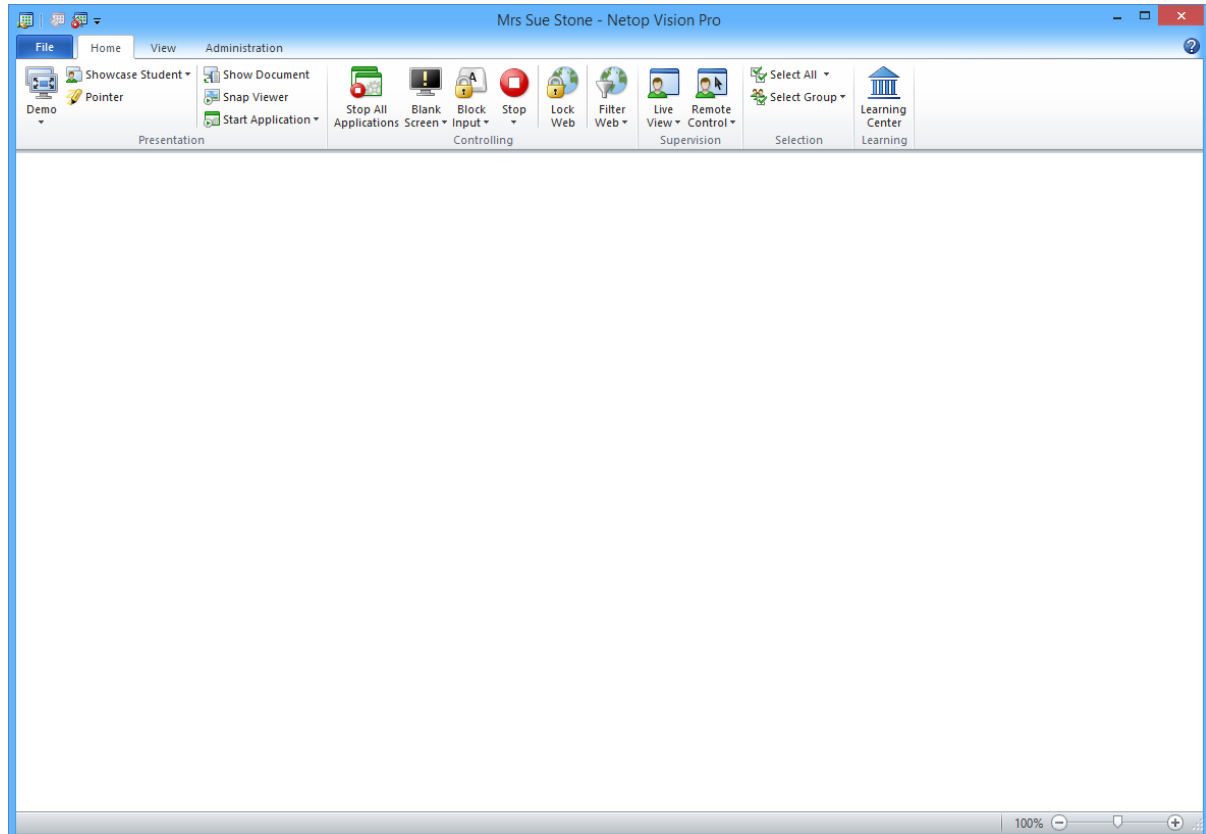
< Back **Finish** Cancel

2. Invite students to join the class

- To invite students, first open the Vision classroom you created.



- Your classroom will launch and the students are "invited" to join the classroom.



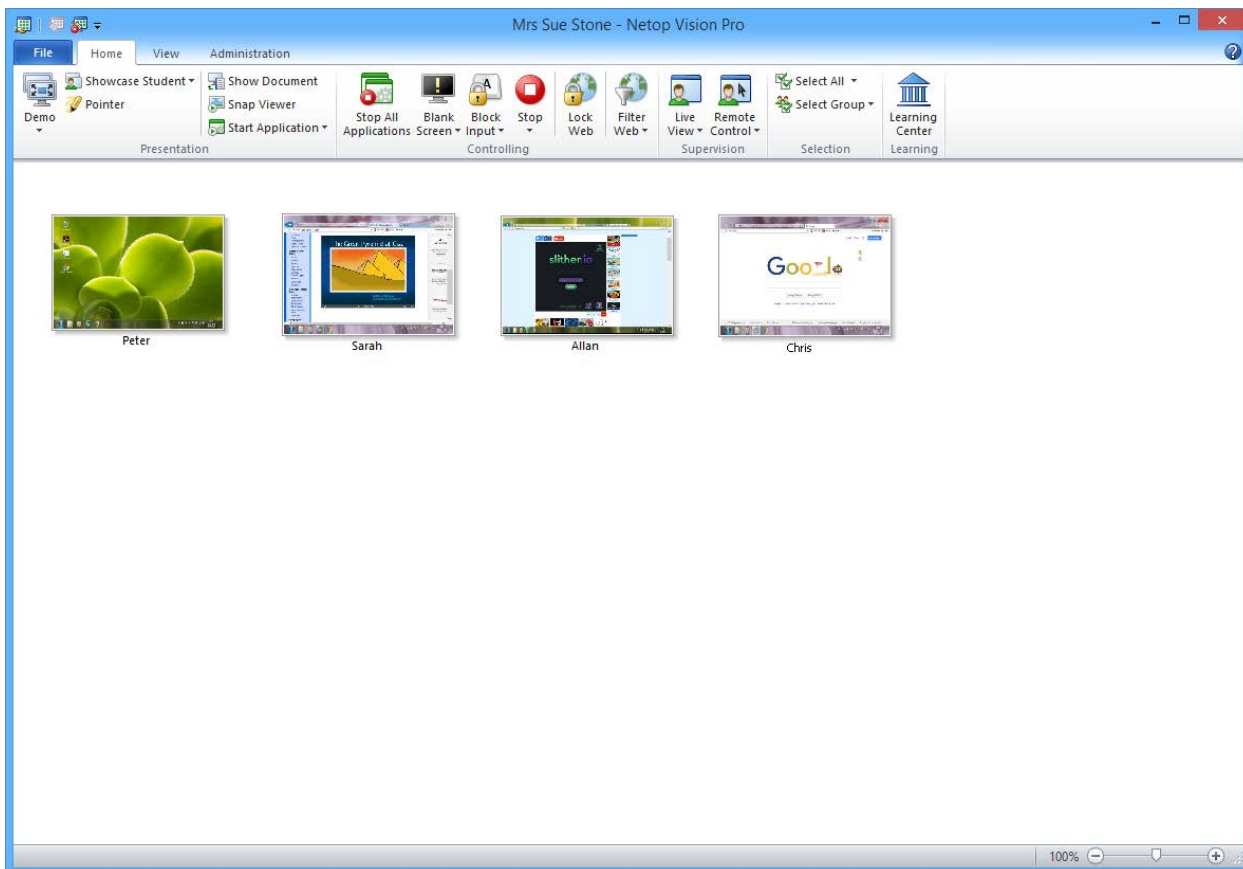
-

3. Learn how students join the class

- An invitation appears on student devices in the notification zone on the right side of the task bar.
- Clicking on the Vision symbol in the task bar then connects the students to the classroom.



- Once the students have joined, their screens are displayed in your Vision classroom.



TIP: To ensure that the instructor has control over who may join the classroom, open enrollment classrooms can also optionally be assigned a password (classroom properties). The students must then enter a password to join.



If you have questions about Netop Vision, please contact [Netop](#) or a [Netop Partner](#) in your area.