

VISION@HAND USER'S GUIDE

NETOP®

Vision™

Classroom Management Software

Version 8.0



Copyright @ 2013 Netop Business Solutions A/S. All Rights Reserved.

Portions used under license from third parties.

Please send any comments to:

Netop Business Solutions A/S

Bregnerodvej 127

DK-3460 Birkerød

Denmark

Fax: Int. +45 45 90 25 26

E-mail: info@netop.com

Internet: www.netop.com

Netop™ is a trademark of Netop Business Solutions A/S. All other products mentioned in this document are trademarks of their manufacturers. Netop Business Solutions A/S denies any and all responsibility for damages caused directly or indirectly as a result of using this document. The content of this document is subject to change without notice. Netop Business Solutions A/S retains the copyright to this document.

Contents

Introduction2
Install and set up Vision@Hand2
Use Vision@Hand3
Questions and answers4
Technical Specifications5

Introduction

Vision@Hand is a utility which is installed on a Vision teacher's computer.

When Vision@Hand is installed, you can use any wireless device with an Internet browser, for example a tablet or a mobile phone, to view student computer thumbnails and activate selected Vision functions.

This enables you to move around in the classroom or even outside the classroom, and still have a good overview of student computer activity.

Vision@Hand enables you to active these Vision functions:

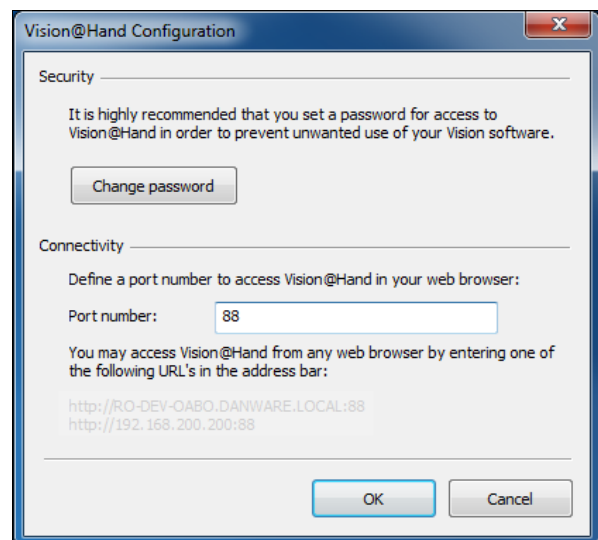
- Blank Screen – Blanks student computer screens and lock keyboards and mice to focus student attention.
- Lock Web – Control Internet access during class time.
- Showcase Student – Share any student's screen with the entire class.



Install and set up Vision@Hand

1. Download the Vision@Hand installer to a teacher's computer running Vision and run the downloaded installer: [Vision@Hand.exe](#).
2. Follow the prompts in the installer. When asked for a password, enter one that you can easily remember. You will use this password to gain access to Vision@Hand from your mobile device.
3. From the **Start** menu open the Vision@Hand Configuration utility and configure Vision@Hand:
 - Set a different access password.
 - Change the port number only if requested by your system administrator. The default port number is 88.
 - See the URL required to connect to Vision@Hand from the browser on your mobile device.

Vision@Hand is ready to use. There is no need to restart the computer or to adjust the student computers.



Use Vision@Hand

1. Open a web browser (Chrome, Internet Explorer, Firefox, Safari, etc.) on your wireless device.
2. Type the URL shown in the Vision@Hand Configuration utility. We recommend that you save this address as a bookmark in your web browser for future reference.
3. When prompted, type the password you have chosen for Vision@Hand.

Once you have connected, Vision@Hand displays student computer thumbnails and a set of four buttons. When you select a button, the button is highlighted with blue to indicate it is active.



Vision@Hand Functions

Note: When you press **Blank** or **Lock Web** in Vision@Hand the function that you selected will apply to ALL of the student computers in your classroom.

Showcase Student

Press this button to display a list of your student computers. From this list, select the student computer you wish to share with the class.

Note: You must have more than one Vision Student in the classroom to use the Showcase Student function.

Blank

Press the **Blank** button on Vision@Hand when your class starts. This will blank the student screens locking the keyboards and mice at the beginning of class getting your students attention so you can talk to the class without distractions.

Pressing the **Blank** button on Vision@Hand corresponds to clicking the **Blank Screen** button in the teacher module to get students' attention.

Lock Web

The **Lock Web** button will disable web surfing for the entire class. Pressing the **Lock Web** button on Vision@Hand corresponds to clicking the **Lock Web** button in the teacher module.

Note: Press the **Stop** button to release the students from surfing restrictions.

Stop

Press the **Stop** button to release Blank screen, Showcase Student and **Lock Web** actions.

To end your Vision@Hand session, simply close your web browser on your wireless device.

Questions and answers

Q: Why I am not able to use Vision@Hand in the school network?

A: School network configurations vary greatly. Check with your school's network administrator to be certain that your school supports the connection of mobile, wireless-enabled devices.

Q: Is there any minimum requirements I should know before using Vision@Hand on my mobile device?

A: Yes, there are three requirements. Connect your mobile device to the local wireless network and make sure that Vision is running on your teacher computer and is connected to your classroom.

Q: Which URL should I use to connect to my Vision classroom using Vision@Hand on my mobile device?

A: The Vision@Hand Configuration utility displays two possible URLs for Vision@Hand. One uses the computer name; the other uses the numerical IP address. While both will work, we recommend that the computer name version be used whenever possible. Although the IP address may change on a regular basis, the computer name will not.

Q: Can I use Vision@Hand on more than one teacher computer?

A: Yes, but each one will have a separate URL. Bookmark each one and you may easily change from one to another.

Q: Can I use Vision@Hand in any web browser?

A: Yes you can. It does not matter if the web browser is on a mobile device or not.

Q: When I am away from the school, I still have the Vision@Hand bookmarks in my browser. Will Vision@Hand work from outside the school?

A: No, Vision@Hand cannot be accessed when teacher is far away from school. Vision@Hand does not work from outside the school. It can only access a teacher computer when the mobile device is connected to the school's network.

Q: I set up Vision@Hand last week and it worked. This week, I cannot connect to it. What is wrong?

A: Many mobile devices provide multiple methods of connecting to networks and the Internet. Use the Vision@Hand Configuration utility on the teacher machine to confirm that you have the most current URL for the teacher computer, make sure that your mobile device is connected to the school wireless network and Vision@Hand will work again.

Q: I installed Vision@Hand; however, I am not able to configure it. The Vision@Hand Configuration utility does not appear in the Start menu. What did I do wrong?

A: You did not properly install Vision@Hand. Download the Vision@Hand .exe file and either run the .exe file as administrator (right-click the .exe file and select "Run as administrator") then follow prompts in the installer, or disable the UAC and Firewall before installing the utility.

Q: While using Vision@Hand do I have to adjust settings in Vision on the teacher computer?

A: No. When Vision@Hand is in use, your regular Vision software works normally; there is nothing to adjust.

Technical Specifications

Vision@Hand installs a web server on the computer which is running the Vision teacher module. When connected through a browser on the teacher's wireless device, this web server displays an interface that allows the teacher to operate the Vision@Hand controls. No software is installed on the mobile device.

Meeting the following technical requirements will allow teachers to take advantage of Vision@Hand.

Teacher's computer

- Vision 7.5.1 classroom management software must be installed and operational.

Network

- TCP/IP network with wireless accessibility (802.11x).
- Network must be accessible from a wireless access point (WAP), connected to the same local network as the Vision classroom; WAP SSID and password must be known to user.
- The port used by Vision@Hand must not be restricted.
- Users must know either the full network name or current IP address of the teacher computer running Vision@Hand.

Mobile Device

- WiFi connection configured to connect to the school wireless network (WLAN).
- Functional web browser that accepts standard URLs.