

# NETOP® Vision™

## Classroom Management Software

Vision has two main components: the teacher module and the student module.

To install Vision remotely on student computers, you will need a login and password that has administrative privileges on the teacher and student machines.

For the remote installation of the student software, you can either log on to the teacher computer with the administrative user account, or you can specify alternative credentials during the remote installation process.

### Installing the Vision Teacher

1. Download the Vision installer file to the teacher's computer and unzip the file.
2. Double-click the Vision setup program icon to launch the Install Shield Wizard and follow the instructions on your screen.
3. On the Setup Mode screen, select **Install** and click **Next**.
4. On the Setup Type screen, select **Vision teacher module** and click **Next**. (Figure 1)
5. On the License screen (Figure 2)
  - 30-Day Trial Users:** Simply click **Next** to begin your trial.
  - Vision-Customers:** Enter your license key to activate your purchase.
6. On the Simple/Advanced Setup screen, select **Simple Setup** and click **Next**.
7. Click **Install** to begin the installation of Vision on the teacher's computer.
8. On the InstallShield Wizard Completed screen, click **Finish** to complete the installation, restart your computer and start Vision.

**Note:** When installing Vision on computers running older Vision versions, the older version must be removed prior to installing Vision.

When upgrading whole classrooms, use the deploy functions from the teacher computer to remove all student modules, then manually uninstall the teacher module, install the teacher module, and use deploy to install Clients.

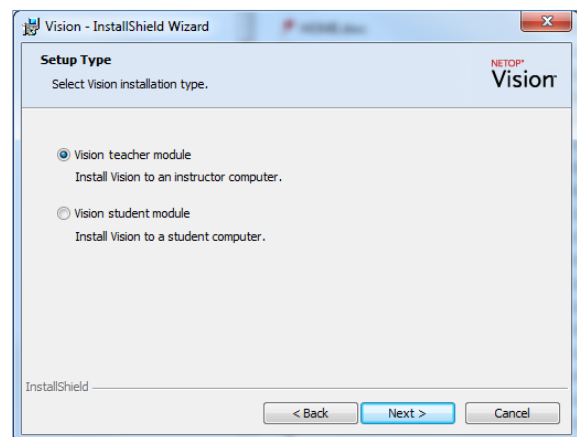


Figure 1

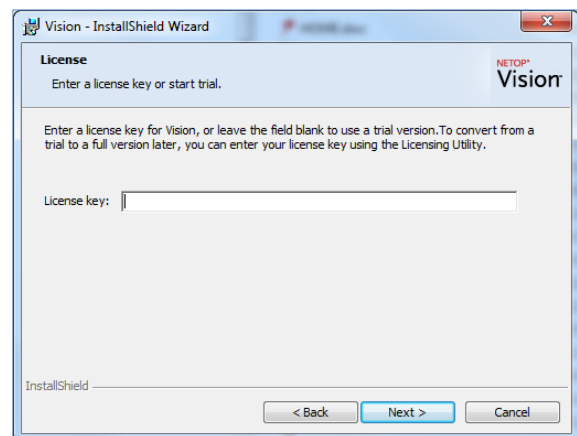
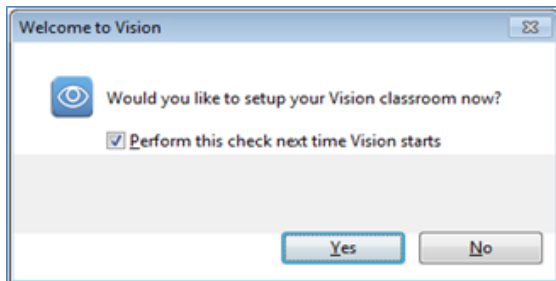


Figure 2

## Remote student software installation

Make sure student computers are powered on. If you are running Windows Firewall, configure it to allow File & Printer sharing on all student computers.

1. When the Vision teacher module launches after the installation and the Welcome to Vision message appears, make sure your student computers are switched on and click **Yes**.



2. At the Vision Classroom Wizard welcome screen, click **Next**.
3. To choose which computers to install Vision on:
  - a) Select your Domain/Workgroup from the drop down box. If you do not know your Domain/Workgroup name, select the asterisk (\*).
  - b) You may also enter a text string in the **Filter** box to filter which computers appear in the Network computers pane.

► **Example:** If all computers in room 205 have the characters **205** in their name, enter **205** in the Filter box. Only the computers that include this text string will appear.

Click > to move the selected computers into your classroom and click **Next** to continue.

4. On the final screen of the Setup Classroom Wizard, read the note and make sure that the check box labeled **Take me to the Vision Deployment Wizard to install or update client software on student computers** is selected.

5. Click **Finish** to close the Setup Classroom Wizard and launch the **Vision Deployment Wizard**.
6. At the Vision Deployment wizard welcome screen, read the important notes and click **Next**.
7. As you need administrative rights to install Vision student software on student computers, you need to decide if you want to proceed with your current credentials, or if you want to specify alternative credentials with administrative rights on the student computers. Click **Next** when you have made your choice.
8. When the Install / Update Vision Student Software dialog appears, select the computers in your classroom targeted for the remote installation. Click **Next** when you have finalized your selection.
9. On the Confirm Installation / Update page, confirm your selection by clicking **Install**.
10. When the Vision Student Software Installation dialog appears, the installation will begin automatically. Once the progress bar and log indicate that the process is complete, click **Next**.
11. When the final screen appears, click **Finish** to open your new Classroom.

► **Note:** If the remote installation does not complete successfully, you may need to install the student software manually on each student computer.



Netop develops and sells software solutions that enable swift, secure and seamless transfer of video, screens, sounds and data between two or more computers over the Internet. For more information, see [www.netop.com](http://www.netop.com).