

## Welcome to the new Netop School 6.0 interface!

In the design of the Netop School 6.0 release, the Netop School team reevaluated the way our users interact with School and in particular with the Teacher module. Our goal was to make working with Netop School easier - for new as well as for existing School users. The result is a completely new user interface designed to help users be more productive and efficient while using Netop School to do their daily tasks.

This document describes the new user interface and the goals that drove the design. It presents a design overview and describes how the enhanced user experience enables users to more easily find and use the Netop School functionality in their daily work.

The target audience is the Netop School user who is familiar with the Netop School 5.5 release or earlier versions. However, new Netop School users might benefit from learning about the ideas behind the tab organization as well.

### Breaking with the past

In previous releases of Netop School, the user interface was composed of menus, toolbars, toolboxes and dialog boxes. While this approach successfully provided access to extensive functionality, it also tended to overwhelm users and not necessarily support them as efficiently as possible. Feedback from especially novice users indicated that they feel interrupted in their workflow while pausing to figure out where to find a particular function to achieve a particular result.

The new user interface is designed to reduce these interruptions and make the user interface intuitive and help users achieve results faster. In short: Netop School made easier to use!

However, recognizing the fact that we do not necessarily know how each and every user would prefer to organize their work area, we also made the user interface highly customizable.

### Results-oriented design

With Netop School 6.0 we focused on a results-oriented design: the user should be able to focus on content and the task at hand rather than on the user interface. Commands and properties should be presented in the appropriate context and the most frequently used commands should be easily accessible.

These are some of the main principles underlying the new design:

- **Intuitive:** Users readily know where to find the features they need and do not have to spend time searching the interface.
- **Consistent:** Users can be confident that the user interface elements like buttons and menus work the same way across the program.
- **Predictable:** Users can trust the straightforward design and locate features where they expect to find them.



Netop Solutions A/S, formerly known as Danware A/S, develops and markets software solutions that enable swift, secure, and seamless transfer of screens, sound, and data between two or more computers. For more information, see [www.netop.com](http://www.netop.com).

The basic Netop School design principles are based on the Microsoft Office 2007 design. Rather than reinvent the wheel, we chose to rely on the fact that Microsoft Office programs are familiar to a wide range of our users and consequently brought many of the Office design ideas into Netop School. This is yet another reason why the new interface will quickly appear familiar even to seasoned Netop School users.

## The Ribbon

One of the reasons users might have found previous Netop School versions complex to use is the large number of places to look for commands: menus, shortcut menus, toolbars and toolboxes. This is addressed in Netop School 6.0 by placing all commands on the Ribbon:



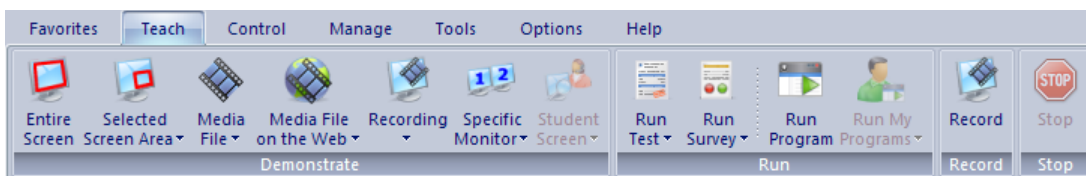
The Ribbon is a region at the top of the screen that presents an easy-to-browse main set of commands. The vast majority of commands are accessible from the Ribbon which is organized into a set of tabs that represent the main functionality groups. The Ribbon provides one-click access to commands with clear, unambiguous labels. To further assist the user all commands have enhanced screen tips when the mouse pointer rests on a command.

Each of the tabs represents a context with a set of features to help users perform specific tasks.

The **Favorites** tab is special in that it is a collection of the most frequently used teaching commands. In the majority of everyday teaching scenarios you will likely be using only the **Favorites** tab. The **Favorites** tab offers super-efficient access to the most frequently used commands, and the new Netop School personalization features let YOU decide which features are most frequently used.

## The Teach tab

The **Teach** tab commands are grouped in **Demonstrate**, **Run**, and **Record**.



Each of these four groups includes the entire range of alternatives within an area. For example, the **Demonstrate** group includes seven alternatives and the **Run** group includes four alternatives. One alternative from those two groups is also available from the



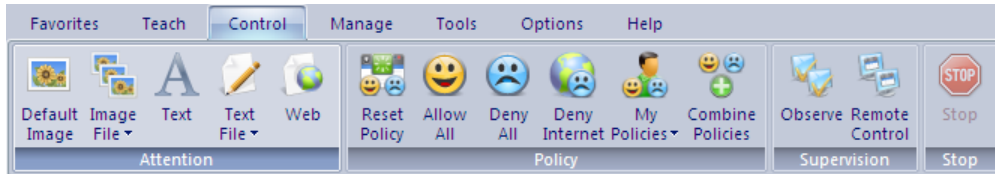
Netop Solutions A/S, formerly known as Danware A/S, develops and markets software solutions that enable swift, secure, and seamless transfer of screens, sound, and data between two or more computers. For more information, see [www.netop.com](http://www.netop.com).

**Favorites** tab. The general idea is that you will likely be using the **Favorites** tab in your daily teaching but can turn to the **Teach** tab when you need alternatives.

The **Stop** button is also available on the **Control** and **Manage** tabs; clicking it stops any ongoing session, whether it is a demonstration, attention or communicate session.

### The Control tab

The **Control** tab commands are grouped in **Attention**, **Policy** and **Supervision**.

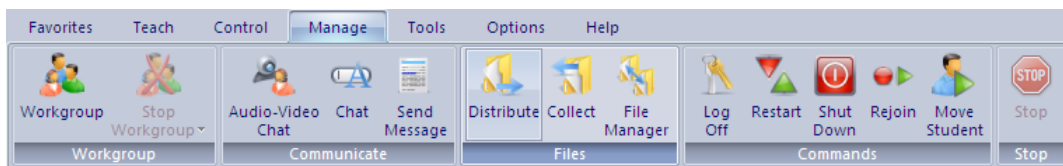


Use one of the **Attention** alternatives to lock student computer screens, keyboards and mouse. Use the **Policy** alternatives to apply a policy that defines which programs can be used or which Internet sites can be accessed. Use the **Supervision** alternatives either to view student computers' screens one at a time, or to remote control student computers.

As with the commands on the **Teach** tab, select commands from the **Control** tab are also available on the **Favorites** tab.

### The Manage tab

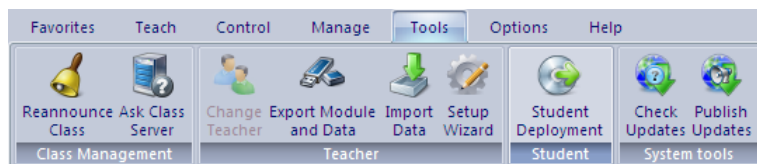
The **Manage** tab commands are focused on managing the classroom in various ways: by setting up workgroups, distributing and collecting files, and restarting or shutting down student computers.



The **Chat** command is also included on the **Favorites** tab.

### The Tools tab

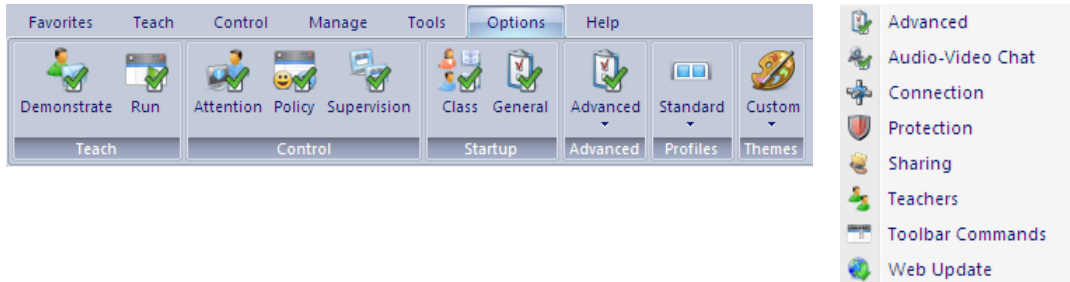
The **Tools** tab commands are collections of tools related to class management, Teacher module setup, preparing for working at home by copying data from the Teacher module, and update of Netop School software.



Netop Solutions A/S, formerly known as Danware A/S, develops and markets software solutions that enable swift, secure, and seamless transfer of screens, sound, and data between two or more computers. For more information, see [www.netop.com](http://www.netop.com).

## The Options tab

The **Options** tab commands are grouped in **Teach, Control, Startup, Advanced, Profiles** and **Themes**, and are used to set up how the commands in the Teacher module work.



The commands in the **Advanced** group are advanced in two senses: they typically require technical knowledge and they are typically set up once and then rarely changed. This goes for example for **Connection** which is used to set up how the Teacher and Student modules communicate and for **Audio-Video Chat** which is used to configure audio.

**Profiles** and **Themes** are predefined layout for tabs and color scheme selections.

One of the commands – **Personalize** - in the **Advanced** group is special in that it is used to customize the Teacher ribbon to match your teaching methods and preferences. The personalize options let you completely define both the layout of tabs and groups as well as which commands should be available on each tab and within each group.

## Make the Ribbon your own

The layout and structure of the Ribbon is based on the Netop School team's collective experience from training, support and site visits. This does not necessarily make it a perfect match for all teaching scenarios and therefore the Ribbon is completely configurable.

You can customize the Ribbon to make it match your teaching methods and preferences.

The personalize options let you completely define both the layout of tabs and groups as well as which commands should be available on each tab and within each group.

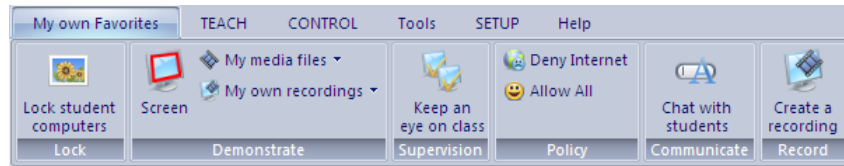
You can:

- Create new tabs and groups.
- Remove tabs and groups.
- Rename tabs and groups.
- Hide tabs and groups.
- Reorganize tabs and groups.
- Reorganize individual commands within tabs and groups.
- Rename individual commands.
- Define whether normal buttons, small buttons or text should be used for individual commands.

Here is one example of a personalized Netop School Teacher user interface:



Netop Solutions A/S, formerly known as Danware A/S, develops and markets software solutions that enable swift, secure, and seamless transfer of screens, sound, and data between two or more computers. For more information, see [www.netop.com](http://www.netop.com).



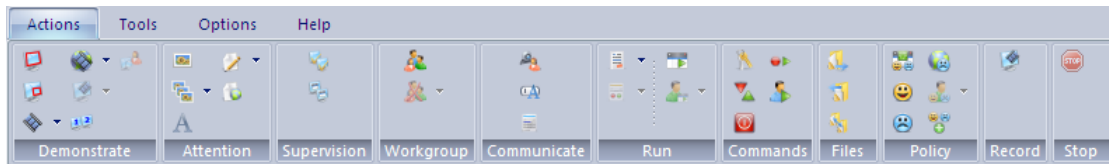
All settings are saved as part of the teacher profile. This means that users can have their own personalized user interface.

While you work on personalizing the Ribbon, you can continuously see the effects of the selections you make as the ribbon is updated with each change you make.

The default Teacher module layout and structure can always be restored by the click of a button.

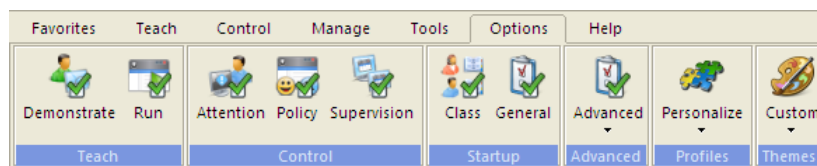
### Profiles and themes

Experienced Netop School users who prefer to have all commands available on one tab have the option of switching to one of the other out-of-box profiles:



The **Tools** and the **Options** tab remain as they are on the standard profile. The third built-in profile strips Netop School of icons and uses text only.

Themes are options to choose a different set of standard colors or completely define your own. One of the standard themes is the classic look:



Netop Solutions A/S, formerly known as Danware A/S, develops and markets software solutions that enable swift, secure, and seamless transfer of screens, sound, and data between two or more computers. For more information, see [www.netop.com](http://www.netop.com).