

# DEPLOY MYVISION STUDENT MODULE

NETOP®

# MyVision® BASIC

Classroom Management Software



Copyright© 1981-2012 Netop Business Solutions A/S. All Rights Reserved.

Portions used under license from third parties.

Netop® is a registered trademark of Netop Business Solutions A/S. All other products mentioned in this document are trademarks of their respective manufacturers. Netop Business Solutions A/S denies any and all responsibility for damages caused directly or indirectly as a result of using this document. The content of this document is subject to change without notice. Netop Business Solutions A/S retains the copyright to this document.

Third-party software libraries:

AXIS 2: Apache 2.0 License (<http://www.apache.org/licenses/LICENSE-2.0.html>)

BouncyCastle cryptography: Copyright (c) 2000 - 2009 The Legion Of The Bouncy Castle (<http://www.bouncycastle.org>)

DNSJava 2.0.0: Copyright (c) 1999-2005, Brian Wellington. All rights reserved. (<http://www.dnsjava.org/dnsjava-current/README>)

JCIFS 0.9.4: JCIFS is Licensed under the LGPL (<http://www.gnu.org/licenses/lgpl-2.1.txt>)

JMDNS: licensed under the Apache License, Version 2.0 (<http://www.apache.org/licenses/LICENSE-2.0.html>)

JNA: This library is provided under the LGPL, version 2.1 or later. (<http://www.gnu.org/licenses/lgpl-2.1.txt>)

JXTA: Copyright (c) 2001-2004 Sun Microsystems, Inc. All rights reserved. ([https://jxta.dev.java.net/jxta\\_license.htm](https://jxta.dev.java.net/jxta_license.htm))

## Contents

Windows remote deployment.....	1
Create a group policy object to use to distribute the MSI file.....	1
Assign the MSI to the policy.....	1
Mac remote deployment.....	2

## Distribute and start the student module

For the MyVision teacher module to be able to connect to the student computers the MyVision student module needs to be installed on the computers.

Once installed the student module automatically starts when a user logs on to the computer.

The student module consists of an MSI file for Windows operating system (one for 32-bit and one for 64-bit) and a PKG file for Mac operating system (included in the DMG file, one for both 32-bit and 64-bit).

The student module can be installed manually on each student computer but can also be distributed and installed remotely. The remote deployment can take place in a number of different ways, depending your organization's processes and preferences. The following sections describe the recommended processes for Windows computers and for Mac computers, respectively.

**Note** When you are deploying the student module remotely, Java Version 5 or higher must be available on the computers you are deploying to.

## Windows remote deployment

We recommend that you deploy using Group Policy in Active Directory. This process consists of two steps:

1. You create a group policy object to be used to distribute the MSI file.
2. You include the MSI file in the policy.

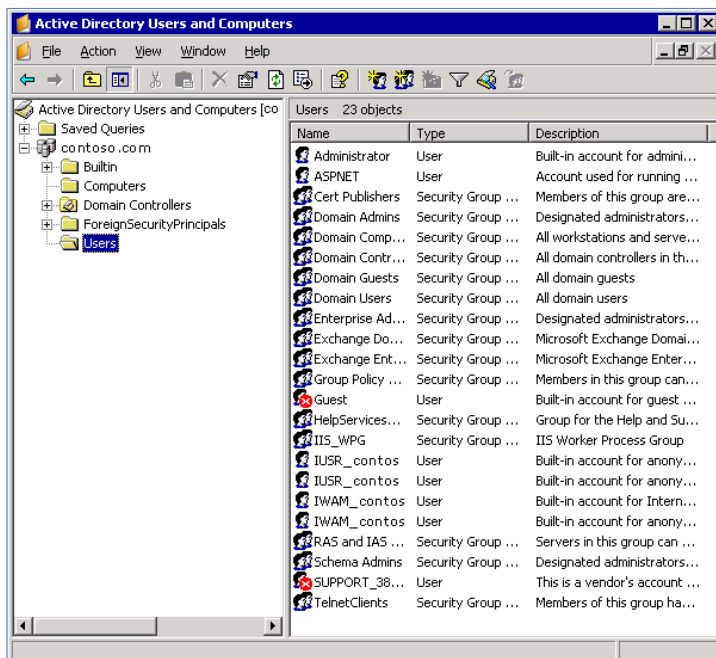
These two steps are described below.

### Create a group policy object to use to distribute the MSI file

1. Start the **Active Directory Users and Computers** snap-in.

To do this, click **Start**, point to **Administrative Tools**, and then click **Active Directory Users and Computers**.

**Note** The exact path may vary depending on your operating system version.



2. In the console tree, right-click your domain, and then click **Properties**.
3. Click the **Group Policy** tab, and then click **New**.
4. Type a name for this new policy, and then press Enter.
5. Click **Properties**, and then click the **Security** tab.

Click to clear the **Apply Group Policy** check box for the security groups that you want to prevent from having this policy applied.

Click to select the **Apply Group Policy** check box for the groups that you want this policy to apply to.

When you are finished, click **OK**.

Now you have created a new group policy to use to distribute the MSI, and made sure that the policy is applied to the appropriate groups. The next step is to assign the MSI to the policy.

### Include the MSI in the policy

1. In the **Active Directory Users and Computers** console tree, right-click your domain, and then click **Properties**.

2. Click the **Group Policy** tab, select the group policy object that you created in the previous step, and then click **Edit**.
3. Under **Computer Configuration**, expand **Software Settings**.
4. Right-click **Software installation**, point to **New**, and then click **Package**.
5. In the **Open** dialog box, type the full Universal Naming Convention (UNC) path of the shared MSI installer package that you want. For example, `\server\share\MyVisionStudentSetup_32Bits.msi`.

**Important** If you choose to use the **Browse** button to access the location, make sure that you use the UNC path (by using **My Network Places**) rather than a mapped drive location to the output folder that contains the shared installer package.

6. Close the **Group Policy** snap-in, click **OK**, and then quit the Active Directory Users and Computers snap-in.

When the client computers start, the managed software package is automatically installed as a service and started.

## Mac remote deployment

The DMG file distributed for the Mac operating system comes with the following:

- A PKG file used for setting up the student
- A shell script for uninstalling the student

Therefore you can use tools like Apple Remote Desktop to set it up remotely. Please refer to documentation from Apple for details about installing PKG files remotely, for example the Apple Remote Desktop Administrator's Guide:

[http://www.apple.com/server/docs/ARD3.2\\_AdminGuide.pdf](http://www.apple.com/server/docs/ARD3.2_AdminGuide.pdf)