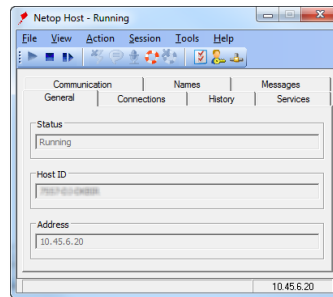
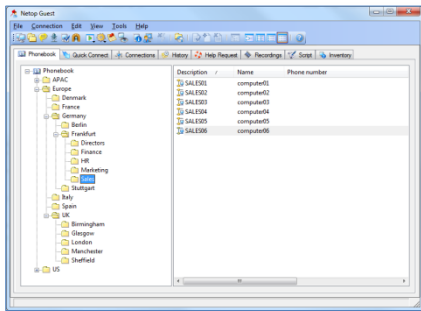


NETOP™

RemoteControl

Secure Remote Management and Support

Netop Remote Control consists of two basic modules:



Netop Guest running on one computer can connect to Netop Host running on another computer to remote control the Host computer.

Install Netop Guest on computers that will be remote controlling and Netop Host on the computer to be controlled remotely. The Netop Remote Control modules are installed from the Downloads section on the Netop site.

For an overview of technical requirements, see:

<http://www.netop.com/products/administration/netop-remote-control/tech-specs>

Netop Guest is installed on the computer that will be used to remote control another computer



1. Click the **Download Guest** link on the Netop Remote Control (Windows) download page.
2. In the **File Download** dialog box, click **Save** to download the installation package and install from a local computer, or click **Run** to start the installation immediately.
3. When the installation is running, follow the installation wizard instructions. When the installation is complete, Netop Guest starts automatically and launches the Setup Wizard. You can just click **Next** to accept the default settings, but the wizard must complete for the appropriate setup files to be properly created. Netop Guest can be started from: **Start > All Programs > Netop Remote Control > Guest**.

Netop Host is installed on the computer that will be remote controlled



1. Click the **Download Host** link on the Netop Remote Control (Windows) download page.
2. In the **File Download** dialog box, click **Save** to download the installation package and install from a local computer, or click **Run** to start the installation immediately.
3. When the installation is running, follow the installation wizard instructions. When the installation is complete, Netop Host starts automatically and launches the Setup Wizard. You can just click **Next** to accept the default settings, but the wizard must complete for the appropriate setup files to be properly created. Netop Host can be started from: **Start > All Programs > Netop Remote Control > Host**.

Optional settings

When Guest and Host modules have been installed, they automatically have default settings and are fully operational without any further setup. However, both modules have setup options that are presented in three wizard steps the first time the module is started. The default options can be reviewed and changed at first startup or any time later.

Netop Guest settings

Start Netop Guest from: **Start > All Programs > Netop Remote Control > Guest.**

The Guest setup wizard can be run any time by clicking **Tools > Run Setup Wizard.**

The setup wizard includes options to define:

- Connection speed
- Use of modems and other serial devices
- Default connection method.

Netop Host setting

Start Netop Host from: **Start > All Programs > Netop Remote Control > Host.**

The Host setup wizard can be run any time by clicking **Tools > Run Setup Wizard.**

The setup wizard includes options to define:

- Communication profiles
NOTE: The Host and Guest modules must use identical communication profiles.
- Whether Netop Host should start automatically when Windows is started.

Getting connected

Before connecting from Netop Guest to Netop Host, please refer to the relevant documentation sections. On the Netop Guest **Help** menu, click **Contents** to open the Netop Guest help information.

We recommend that you refer to these sections:

- Security
- Communication profiles
- Start and end a remote control session

On the Netop Host **Help** menu, click **Contents** to open the Netop Host help information. We recommend that you refer to this section in particular:

- Notification

TIP: Remove a Netop module while preserving configuration settings

When you remove a Netop module using the installation package, all configuration settings (*.ndb) are preserved unless you explicitly choose to remove them.

If you remove a Netop module using **Add or Remove Programs** from Windows Control Panel, configuration settings are not removed.

