

NETOP™ REMOTE CONTROL

Mobile | Embedded™

Remote Support for Mobile & Embedded Systems

Installation Guide - Host

Version 9.6



Copyright© 1981-2012 Netop Business Solutions A/S. All Rights Reserved.
Portions used under license from third parties.
Please send any comments to:
Netop Business Solutions A/S
Bregnerodvej 127
DK-3460 Birkerød
Denmark
Fax: Int +45 45 90 25 26
E-mail: info@netop.com
Internet: www.netop.com

Netop™ is a trademark of Netop Business Solutions A/S. All other products mentioned in this document are trademarks of their respective manufacturers. Netop Business Solutions A/S denies any and all responsibility for damages caused directly or indirectly as a result of using this document. The content of this document is subject to change without notice. Netop Business Solutions A/S retains the copyright to this document.

The document is optimized for double-sided printing.

Contents

1 Introduction.....	2
2 Install on a desktop computer.....	3
3 Install from a desktop computer.....	8
4 Install from a web server.....	9
5 Set up Netop Mobile Host.....	10
6 Remove Netop Mobile Host and Host Manager.....	11
Index.....	12

1 Introduction

This guide explains how to install Netop Mobile.

You can install Netop Mobile on a mobile device either from a desktop computer or from a web server that stores Netop Mobile installation files.

To install Netop Mobile from a desktop computer, you must install the Netop Mobile installation files on the desktop computer.

To customize the Netop Mobile Host configuration, you must install Netop Mobile Host Manager on a desktop computer.

Requirements

To install and use Netop Mobile & Embedded, these system requirements apply:

Memory	16 MB (32 MB recommended)
Disk space	Host Manager – 10 MB Mobile Host – 4 MB
Operating system and processor	<ul style="list-style-type: none">• Windows CE 4.2 (ARM)• Windows CE 5 (ARM, x86)• Windows CE 6 (ARM)• Windows Pocket PC 2003 (ARM)• Windows Mobile 5 (ARM)• Windows Mobile 6 (ARM)• Windows Mobile 6.1 (ARM)• Windows Mobile 6.5 (ARM)

Additional devices and processors can be supported upon request.

Note

For updated requirements information, see <http://www.netop.com/products/administration/netop-mobile-and-embedded/tech-specs.htm>

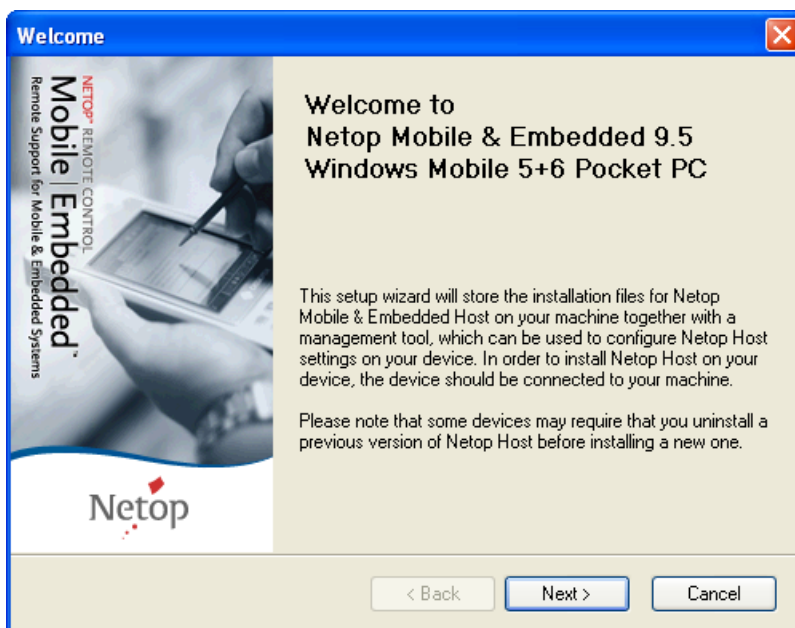
2 Install on a desktop computer

You can download the Netop Mobile installation files from Netop based on the required operating system and processor:

Operating systems	Processor	Installation package
Windows Mobile 6/6.1/6.5 Classic	ARM	WM50PPC
Windows Mobile 6/6.1/6.5 Standard	ARM	WM50SP
Windows Mobile 6/6.1/6.5 Professional	ARM	WM50PPC
Windows Mobile 5 Pocket PC	ARM	WM50PPC
Windows Mobile 5 Pocket PC Phone Edition	ARM	WM50PPC
Windows Mobile 5 Smartphone	ARM	WM50SP
Windows Pocket PC 2003	ARM	PPC2003
Windows Pocket PC 2003 SE	ARM	PPC2003
Windows Embedded CE 6.0	ARM	MORPH600
Windows Embedded CE 5.0	ARM, x86	S500_ARM/x86
Windows Embedded CE 4.2	ARM	S420

Download the files to a desktop computer directory.

Double-click setup.exe to start the installation wizard:

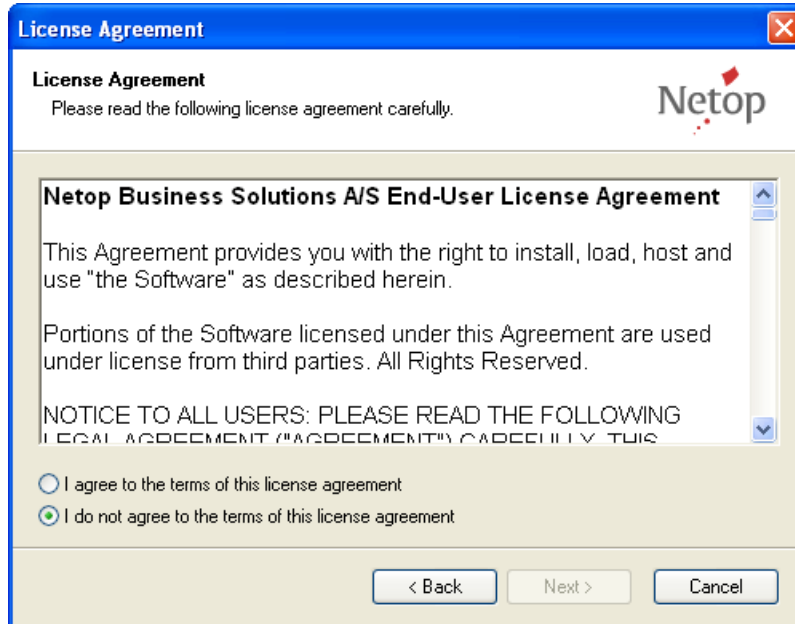


Install on a desktop computer

This procedure will install Netop Mobile Host Manager and mobile device installation files on the desktop computer.

To install Netop Mobile Host on a mobile device during desktop computer installation, connect the mobile device physically and with ActiveSync to the desktop computer.

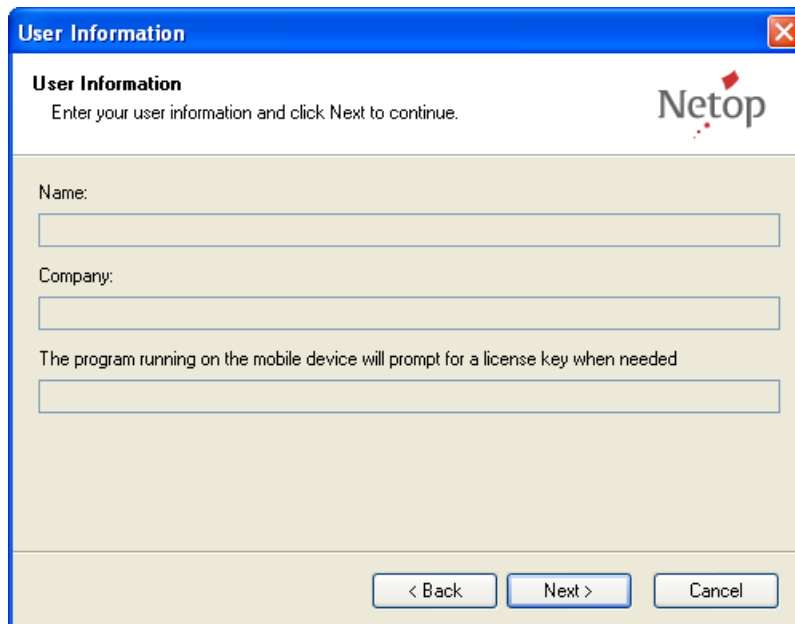
Click **Next** to go to the **License Agreement** page:



The screenshot shows a Windows-style dialog box titled "License Agreement" with a blue header bar and a close button (X) in the top right corner. The main content area has a light beige background. At the top left, it says "License Agreement" followed by "Please read the following license agreement carefully." The Netop logo is in the top right. Below this is a scrollable text area containing the "Netop Business Solutions A/S End-User License Agreement". The text includes: "This Agreement provides you with the right to install, load, host and use 'the Software' as described herein.", "Portions of the Software licensed under this Agreement are used under license from third parties. All Rights Reserved.", and "NOTICE TO ALL USERS: PLEASE READ THE FOLLOWING LEGAL AGREEMENT ('AGREEMENT') CAREFULLY. THIS". At the bottom of the text area are two radio buttons: "I agree to the terms of this license agreement" (which is selected) and "I do not agree to the terms of this license agreement". At the very bottom of the dialog are three buttons: "< Back", "Next >", and "Cancel".

Read the license agreement and click **I agree to the terms of this license agreement**.

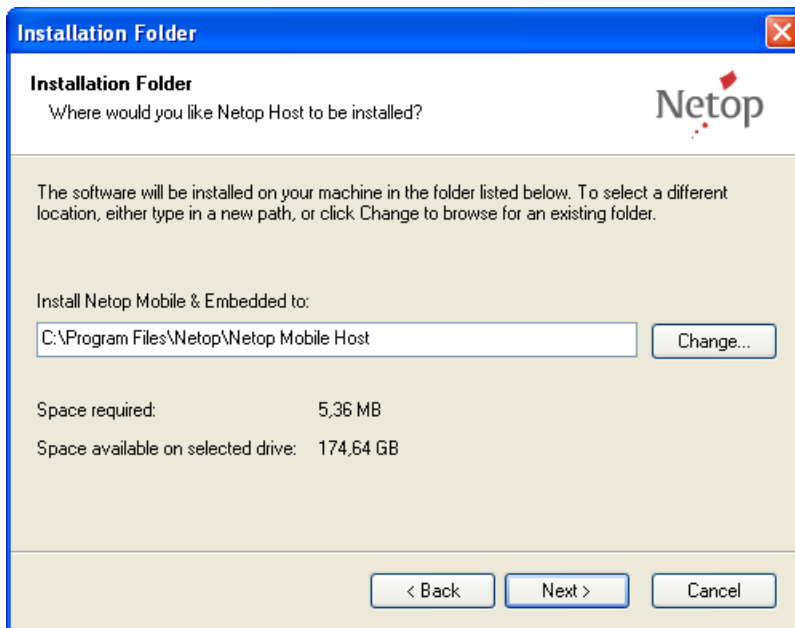
Click **Next** to go to the **User Information** page:



The screenshot shows a Windows-style dialog box titled "User Information" with a blue header bar and a close button (X) in the top right corner. The main content area has a light beige background. At the top left, it says "User Information" followed by "Enter your user information and click Next to continue." The Netop logo is in the top right. Below this are three input fields: "Name:" with an empty text box, "Company:" with an empty text box, and "The program running on the mobile device will prompt for a license key when needed" with an empty text box. At the bottom of the dialog are three buttons: "< Back", "Next >", and "Cancel".

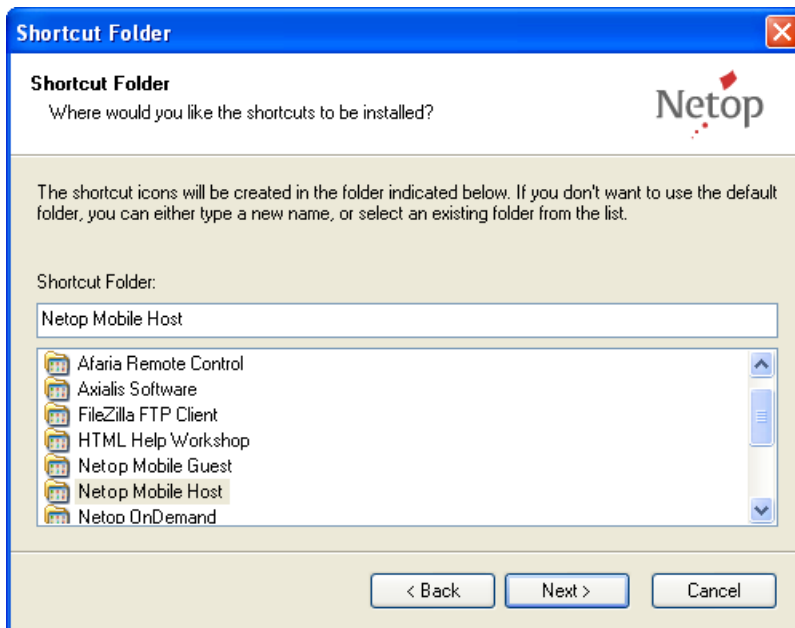
Specify your name and company name in the fields.

Click **Next** to go to the **Installation Folder** page:



This window suggests installing to the C:\Program Files\Netop\Netop Mobile Host directory. Click **Change** to display the Windows **Select Folder** window to optionally specify another destination directory.

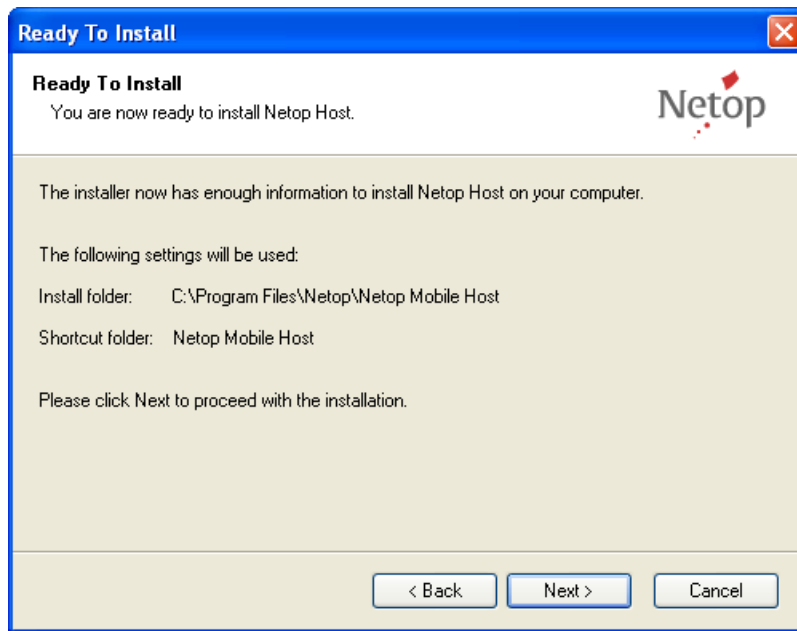
Click **Next** to go to the **Shortcut Folder** page:



This window suggests creating a **Start > All Programs** folder named **Netop Mobile Host**. You can select an existing program folder in the pane or edit the suggested folder name in the **Shortcut Folder** field.

Install on a desktop computer

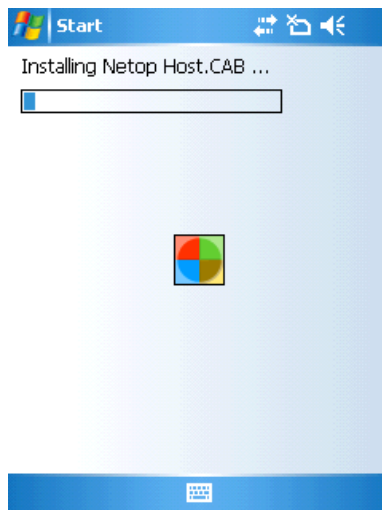
Click **Next** to go to the **Ready To Install** page:



This window will display your selections. Click **Next** to execute the installation of Netop Mobile Host Manager and the mobile device installation files on the desktop computer.

If a mobile device is connected by ActiveSync, the installer will identify the mobile device type and download the corresponding installation file. You will then be prompted to check your mobile device display to see if you need to carry out additional steps to complete the installation.

The mobile device will typically display this:



When complete, this will be displayed:



Click **OK** to finish the installation on the mobile device.

If no mobile device is connected by ActiveSync, a message will inform you that the installed applications will be downloaded to the mobile device on the next mobile device connection.

See also [Install from a desktop computer](#).

On your desktop computer, click **OK** in the displayed message box to go to the **Installation Successful** page:



Click **Finish** to finish the desktop computer installation.

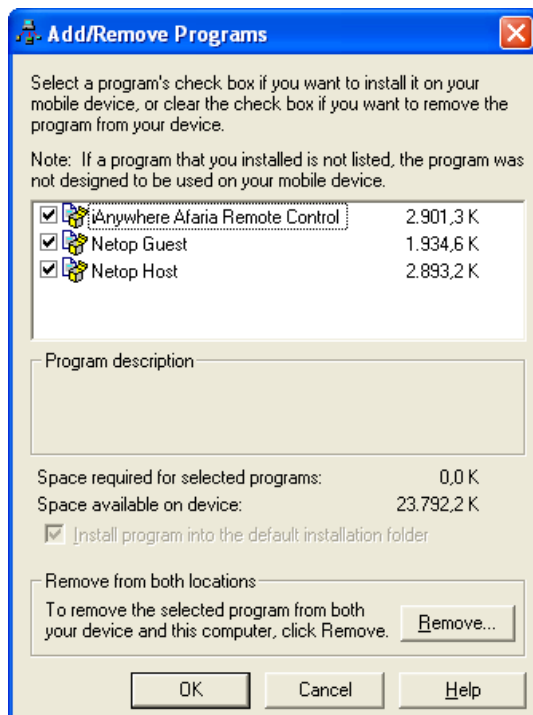
3 Install from a desktop computer

Connect the mobile device physically and with ActiveSync to a desktop computer on which the Netop Mobile installation files have been installed.

If the Netop Mobile Host was not installed on a mobile device during desktop computer installation, the installation on the mobile device will start automatically when connected by ActiveSync.

Otherwise, on the desktop computer select **Start > All Programs > Netop Mobile Host > Install Netop Host** to start the installation on the mobile device.

Alternatively, in the **Microsoft ActiveSync** window, select **Tools > Add/Remove Programs**.



From the **Add/Remove Programs** window you can download program installation files from the desktop computer to the mobile device.

The window will display all programs that you can install on them mobile device from the desktop computer. If a check box has been selected, ActiveSync has detected that the program has already been installed on the mobile device. If the **Netop Host** check box has not been selected, select it and click **OK** to start the installation on the mobile device.

4 Install from a web server

To enable installation from a web server or to install locally on the device, you must run the relevant cab file for your device:

Operating systems	Processor	Cab file
Windows Mobile 6/6.1/6.5 Classic	ARM	NetopHost_WM5_StrongARM.cab
Windows Mobile 6/6.1/6.5 Standard	ARM	NetopHost_S2003_StrongARM.cab
Windows Mobile 6/6.1/6.5 Professional	ARM	NetopHost_WM5_StrongARM.cab
Windows Mobile 5 Pocket PC	ARM	NetopHost_WM5_StrongARM.cab
Windows Mobile 5 Pocket PC Phone Edition	ARM	NetopHost_WM5_StrongARM.cab
Windows Mobile 5 Smartphone	ARM	NetopHost_S2003_StrongARM.cab
Windows Pocket PC 2003	ARM	NetopHost_PPC_StrongARM.cab
Windows Pocket PC 2003 SE	ARM	NetopHost_PPC_StrongARM.cab
Windows Embedded CE 6.0	ARM	NetopHost_S_StrongARM.cab
Windows Embedded CE 5.0	ARM, x86	NetopHost_S_StrongARM.cab/ NetopHost_S_Intel 486.cab
Windows Embedded CE 4.2	ARM	NetopHost_WCEDP_StrongARM.cab

To install Netop Mobile Host on a mobile device, download the installation file that matches the mobile device operating system to start the installation.

For more detailed information about manually installing the Netop Mobile Host, please refer to the OEM_INSTALL.TXT file, which can be found in the OEM_INSTALL.ZIP file.

5 Set up Netop Mobile Host

To set up the Netop Mobile Host identically on multiple mobile devices:

1. Install from a desktop computer on one mobile device.
2. Load the Netop Mobile Host to specify the license number.
3. Customize the Netop Mobile Host setup using Netop Mobile Host Manager.
4. Copy Host.xml (customized setup file) and Host.lic (license file) from \Program Files\Netop Host on the mobile device to a selected directory on the desktop computer.
5. Install from a desktop computer on other mobile devices.
6. Copy the Host.xml and Host.lic files from the selected directory on the desktop computer to the \Program Files\Netop Host directory of the mobile device.

See also

Netop Mobile Host User's Guide

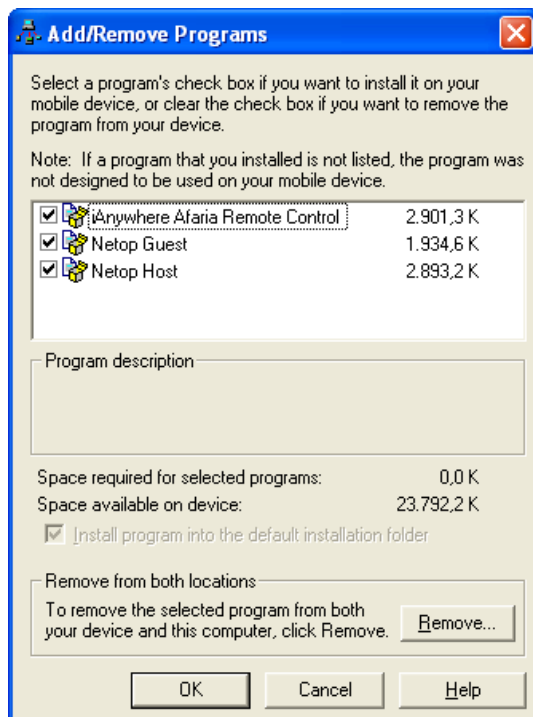
6 Remove Netop Mobile Host and Host Manager

To remove the Netop Mobile Host from a mobile device, tap **Start > Settings > System > Remove Programs > Netop Host > Remove**.

Note

To remove all traces of the installation, manually remove the \Program Files\Netop Host directory.

To remove a desktop computer installation and the Netop Mobile Host from a mobile device connected to the desktop computer by ActiveSync, in the **Microsoft ActiveSync** window select **Tools > Add/Remove Programs**.



The **Add/Remove Programs** window will display all programs that you can install on the mobile device from the desktop computer. If a check box has been selected, ActiveSync has detected that the program has been installed on the mobile device.

To remove the Netop Mobile Host from the mobile device and remove Netop Mobile Host Manager and the mobile device installation files from the desktop computer, clear the selected **Netop Host** check box and click **Remove**.

You can remove Netop Mobile Host Manager and the mobile device installation files from the desktop computer without removing the Netop Mobile Host from a mobile device connected to the desktop computer by ActiveSync. Go to **Start > Control Panel > Add or Remove Programs > Netop Mobile Host**.

Note

To remove all traces of the desktop computer installation, manually delete the **Start > All Programs > Netop Mobile Host** program folder.

See also

Netop Mobile Host User's Guide

Index

A

- ActiveSync 3, 8, 11
- Add/Remove Programs 8, 11

C

- cab files 9
- customizing 10

I

- installation files 9
- installation wizard 3
- installing 2
 - from a desktop computer 8
 - from a web server 9
 - Netop Mobile Host Manager 3
 - on a desktop computer 3

L

- license number 10

N

- Netop Mobile Host Manager 3, 10

O

- operating system 2, 3

P

- processor 3

R

- removing
 - Netop Mobile Host from mobile device 11
 - Netop Mobile Host Manager 11
- requirements 2, 9

S

- setting up Netup Mobile Host
 - identically on multiple mobile devices 10

W

- web server 9
- wizard 3