

Netop Asset Control



Release notes – version 1.2

Current version	1.2
Shipping from	15-07-2009
Latest builds	
Netop Asset Manager	2009.190
Netop Asset Agent	2009.190

Introduction

Netop is pleased to introduce a new update of our IT Asset Management solution - Netop Asset Control. This version release introduces a number of enhancements including support for the free editions of Microsoft SQL Server – SQL Express 2005 and 2008 (with advanced services), improves accessibility and also addresses a number of known technical issues.

As a minor version release, customers with an existing license for version 1.0 can download and install this update using their existing serial numbers.

Database

- **SQL Express** – the Asset Control database can now be used with the free editions of Microsoft SQL Server – SQL Express 2005 & 2008 (with advanced services). Support for the full editions of SQL including Workgroup, Standard and Enterprise is still available. Using the SQL Express editions also allows the Asset Control database to be set up on a workstation operating system such as Windows XP or Vista, making it easier for customers to evaluate and implement the solution in smaller environments
- **SQL Instances** – it is now possible to setup and use the Asset Control database on SQL Servers where multiple instances are present. When creating or connecting to a database, the Lookup button can be used to locate multiple instances or the path to the required SQL instance can be typed in directly, i.e. `SQLSERVER\INSTANCENAME`

Platform

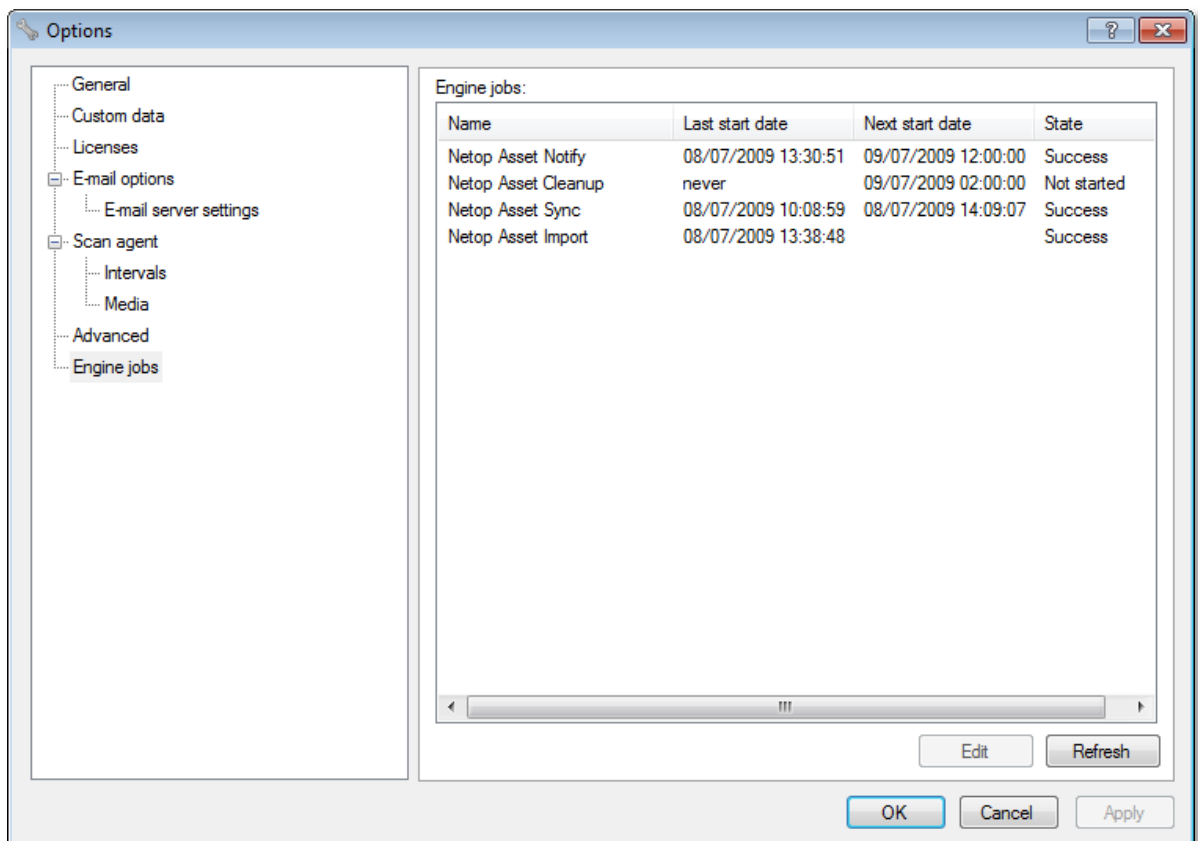
- **Windows 7 RC support** – in preparation for the official launch of Windows 7, the Manager and Agent modules now include support for the Windows 7 release candidate (build 7100)

Netop® and the red kite are registered trademarks of Netop Business Solutions A/S. All other products mentioned in this document are trademarks of their respective manufacturers. Netop Business Solutions A/S denies any and all responsibility for damages caused directly or indirectly as a result of using this document. The content of this document is subject to change without notice.

Asset Engine Service

- In order to accommodate support for SQL Express and to improve accessibility to administrative options, a new service called Netop Asset Engine is installed during the setup process on the SQL Server.

This service handles the various Asset Control jobs that were previously handled by the SQL Agent including Import, Sync, Notify and Cleanup. The status and behavior of these jobs can now be viewed and configured through the Asset Manager rather than via the SQL Management Studio. Only users with the appropriate administrative privileges can make alterations to Engine jobs



Access Rights

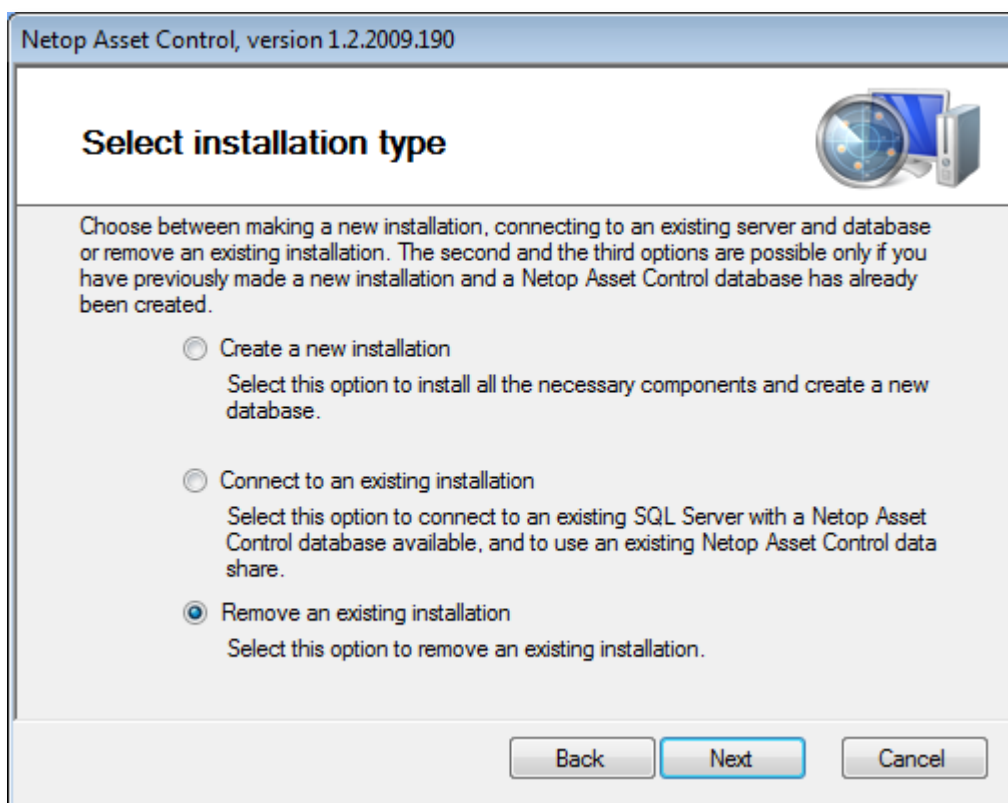
- Improvements have been made for permissions applied to the data share on the SQL Server during installation in order to restrict unauthorized access. It is also now easier for Administrators to grant user access to the Asset Control database by simply controlling membership to the relevant Asset Control security group that is created in Active Directory during the setup process

Netop® and the red kite are registered trademarks of Netop Business Solutions A/S. All other products mentioned in this document are trademarks of their respective manufacturers. Netop Business Solutions A/S denies any and all responsibility for damages caused directly or indirectly as a result of using this document. The content of this document is subject to change without notice.

Improved Setup Wizard

- The setup wizard has been improved to include an option that removes an existing installation. This option will completely uninstall the Asset Control database, data share and service on the selected SQL Server providing you are logged on with the appropriate administrative account. The Asset Manager itself is still uninstalled through the normal Windows control panel options.

In order to improve access to the setup wizard, a new option called 'Run setup wizard' has also been added to the Options menu in the Asset Manager

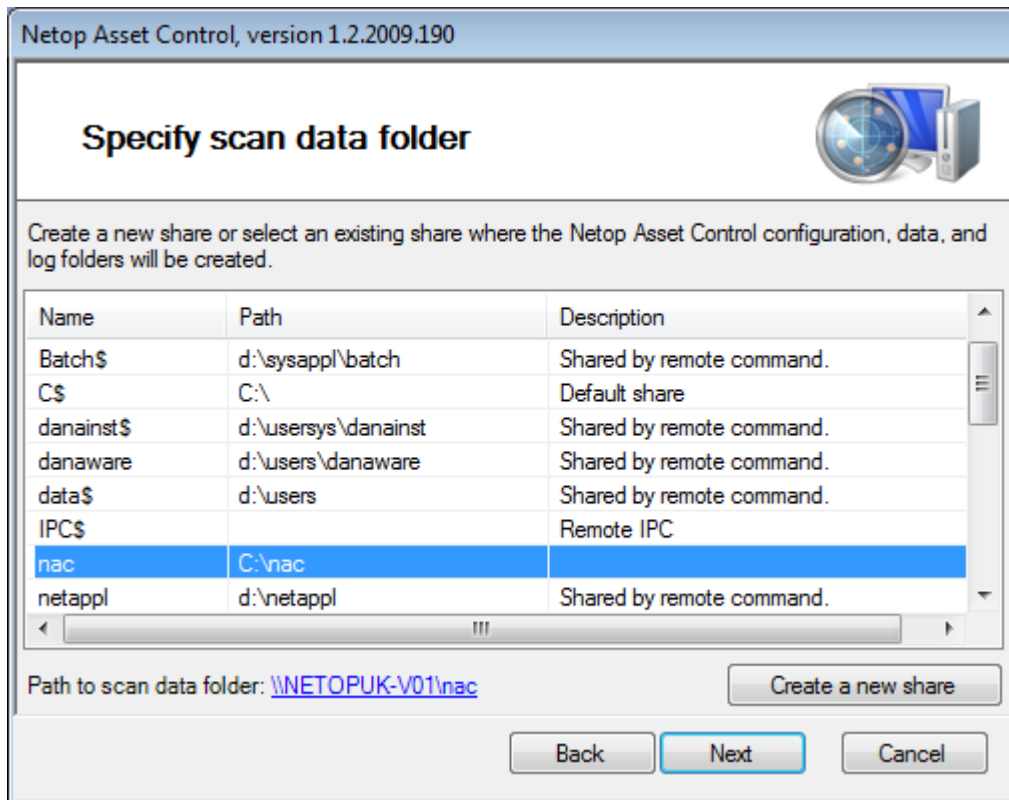


- When connecting to an existing database or removing an existing installation, only the Asset Control related databases will be shown during the setup wizard
- When connecting to an existing database, an additional checkbox option called 'Upgrade an existing installation' is available. Choosing this option will update all relevant files on the SQL Server including the data share and service but will only take affect if the current user is logged on with the necessary administrative privileges

Netop Asset Control

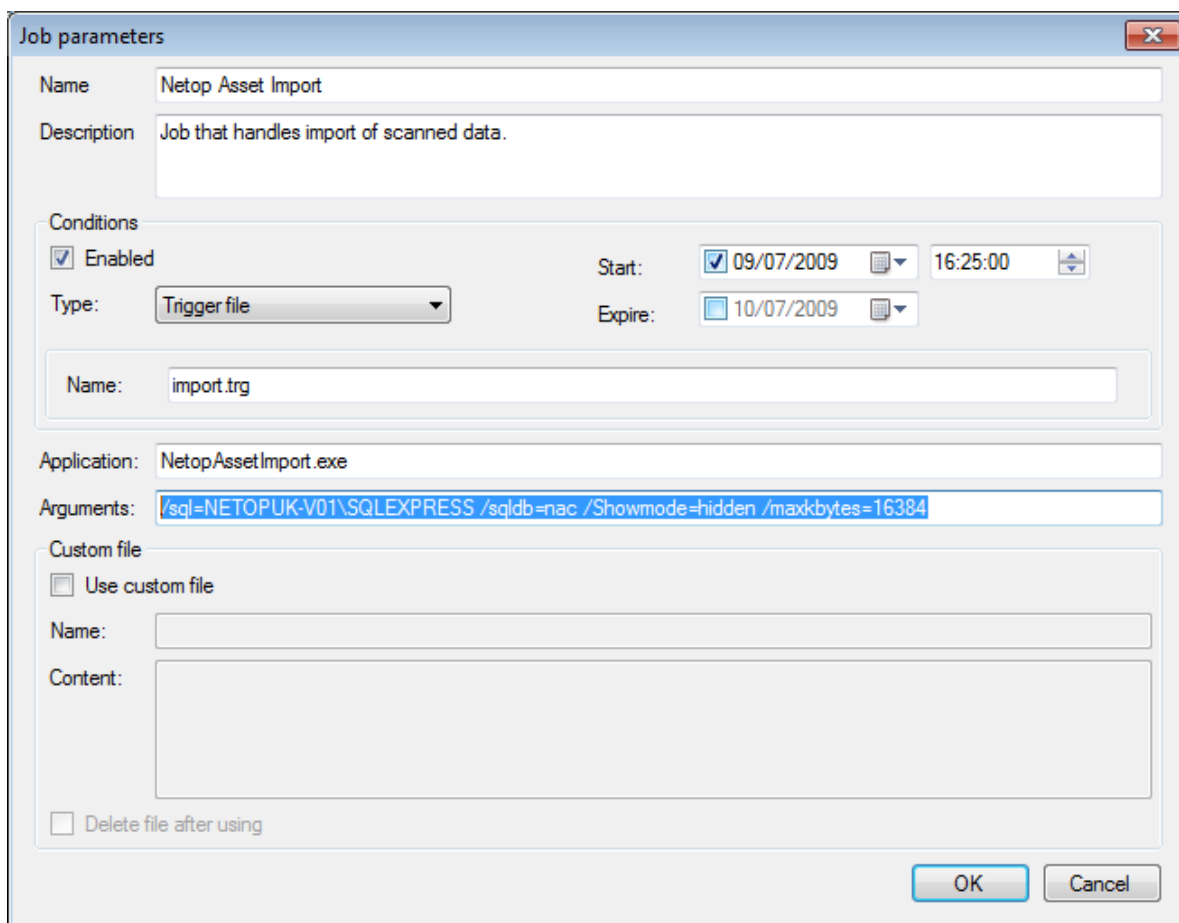


- When creating a new database, the 'Data share' section of the setup wizard has been improved. As the data share can only be created on the SQL Server itself, the wizard only allows access to the SQL Server to use an existing share or create a new share. The network browse option has now been removed



Import File Size

- The default maximum size of each import file (XML) created by the Asset Agent has been changed from 4096 KB to 8192 KB. The default value can also be customized in the Asset Manager using the maxkbytes= argument in the Import job parameters



Job parameters

Name: Netop Asset Import

Description: Job that handles import of scanned data.

Conditions

Enabled

Type: Trigger file

Start: 09/07/2009 16:25:00

Expire: 10/07/2009

Name: import.trg

Application: NetopAssetImport.exe

Arguments: /sql=NETOPUK-V01\SQLEXPRESS /sqldb=nac /Showmode=hidden /maxkbytes=16384

Custom file

Use custom file

Name:

Content:

Delete file after using

OK Cancel

Known issues fixed

- Database installation on a Windows Domain using a different Fully Qualified Domain Name (FQDN) and NetBIOS name would fail (DE1773)
- After initiating a Remote Scan, the Manager would not always show a correct list of target computers in the summary view (DE1135)
- Selecting the License Compliance report when using SQL Server 2008 would display an error, 'Value was either too large or too small for a Decimal' (DE1963)
- On x64 machines the Asset Agent did not always retrieve a complete list of 32-bit applications (DE1166)
- When using the Custom Data view in the Asset Manager, computers were not re-organized according to the newly retrieved data (DE1238)
- If an incorrect database name was chosen when manually changing the connection options in the Asset Manager, an incorrect error message relating to licenses was displayed (DE1174)
- When manually changing the SQL Server and Data share in the Asset Manager at the same time, only the SQL Server information would be saved. It is now recommended to run the Setup wizard in order to connect to a different SQL Server and Database (DE1186)
- If a Domain Controller was unavailable during the creation of a new database, an unhandled exception error would occur when creating the data share (DE1989)